

CORRECTION

Open Access



Correction: Clinical application of a double-modified sulfated bacterial cellulose scaffold material loaded with FGFR2-modified adipose-derived stem cells in urethral reconstruction

Zhenpeng Zhu^{1,2,4†}, Jiayu Yang^{3†}, Xing Ji^{1,2,4}, Zicheng Wang⁵, Chengxiang Dai^{3,6}, Suke Li⁶, Xuesong Li^{1,2,4}, Yajie Xie³, Yudong Zheng^{3*†}, Jian Lin^{1,2,4*†} and Liqun Zhou^{1,2,4*†}

Correction to:
Stem Cell Research and Therapy (2022) 13:463
<https://doi.org/10.1186/s13287-022-03164-9>

Following the publication of the original article [1], the authors have identified some errors in the Figs. 2, 4,

[†]Contributed equally: Zhenpeng Zhu and Jiayu Yang

[†]Zhenpeng Zhu and Jiayu Yang are co-first authors

[†]Yudong Zheng, Jian Lin and Liqun Zhou are co-senior authors

The original article can be found online at <https://doi.org/10.1186/s13287-022-03164-9>.

*Correspondence:

Yudong Zheng
zhengyudong@mater.ustb.edu.cn

Jian Lin
linjianbj@163.com

Liqun Zhou
zhoulqmail@sina.com

¹ Department of Urology, Peking University First Hospital, Beijing 100034, China

² Institution of Urology, Peking University, Beijing 100034, China

³ University of Science and Technology Beijing, Beijing 100083, China

⁴ Beijing Key Laboratory of Urogenital Diseases (Male) Molecular Diagnosis and Treatment Center, Beijing 100034, China

⁵ Department of Urology, The First Affiliated Hospital of Anhui Medical University, Hefei 230000, China

⁶ Cellular Biomedicine Group Inc. (CBMG), Shanghai 200234, China

5, 7 and Additional file 1: Fig. S1. The correction are as follows:

In Fig. 2a, the image MBC/2um was duplicated from Fig. 3a, DMBC/2um in the team's previous publication [2]. It has been replaced with parallel experiment of the microstructure of MBC in 2 μm. And all the images were added with a clearly standard ruler. The pictures only show the microstructure of the material and do not affect the experimental results. And in Fig. 1b, the authors corrected the wrong spelling of MBC to SBC.

In Fig. 4E, the magnification of Transwell in migration experiment was not consistent with that in invasion experiment, so the authors replaced the images with the same magnification in migration experiment. The statistics are based on the magnification statistics of Invasion, but there is a problem with the display picture, and the 3 repeated tests all show the similar results.

In Fig. 5C, the graphic drawing of GSEA enrichment analysis is wrong, but the analysis process and results are correct, which does not affect the conclusion, and the related graphics have been redrawn.

In Fig. 7C, magnified insert of 3 month/FGFR2 ctrl (vector) group was duplicated from 3 month/FGFR2 OE group. In Fig. 7J, the 1 month/FGFR2 negative group was corrected, magnified insert of 3 month/FGFR2 OE



© The Author(s) 2024. **Open Access** This article is licensed under a Creative Commons Attribution 4.0 International License, which permits use, sharing, adaptation, distribution and reproduction in any medium or format, as long as you give appropriate credit to the original author(s) and the source, provide a link to the Creative Commons licence, and indicate if changes were made. The images or other third party material in this article are included in the article's Creative Commons licence, unless indicated otherwise in a credit line to the material. If material is not included in the article's Creative Commons licence and your intended use is not permitted by statutory regulation or exceeds the permitted use, you will need to obtain permission directly from the copyright holder. To view a copy of this licence, visit <http://creativecommons.org/licenses/by/4.0/>. The Creative Commons Public Domain Dedication waiver (<http://creativecommons.org/publicdomain/zero/1.0/>) applies to the data made available in this article, unless otherwise stated in a credit line to the data.

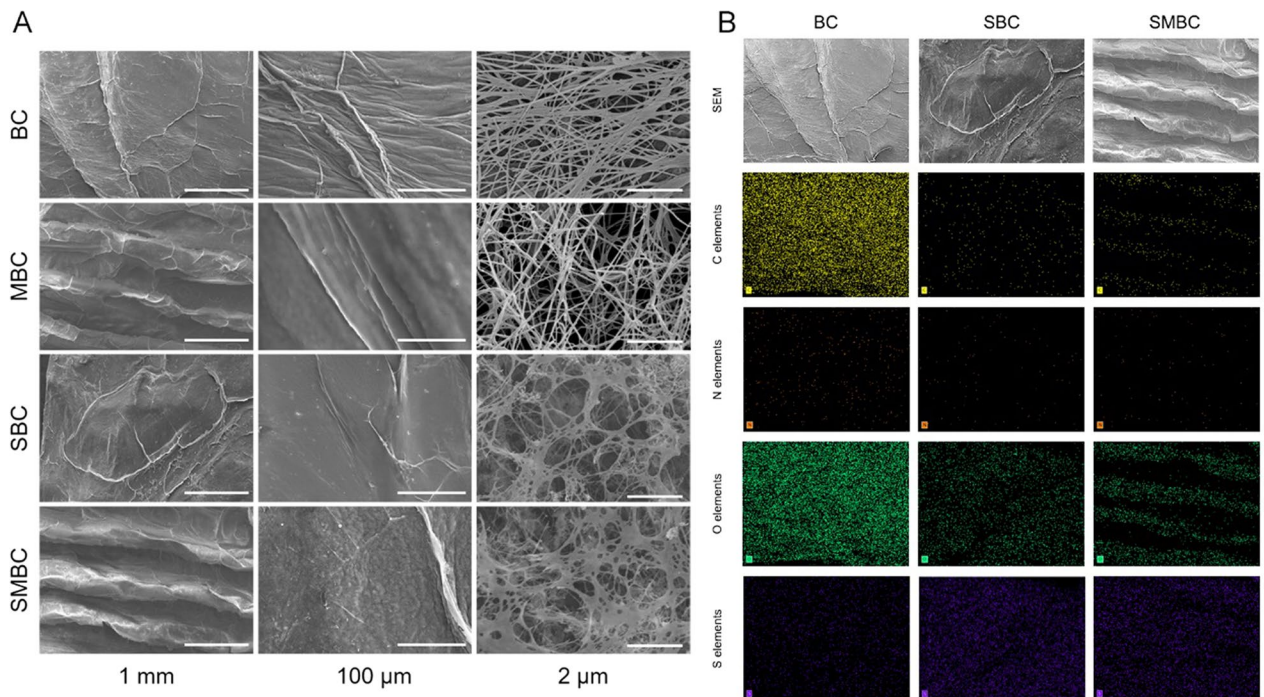


Fig. 2 **A** Microstructure of BC, MBC, SBC, and SMBC; **B** surface scan images of BC, SBC, and SMBC

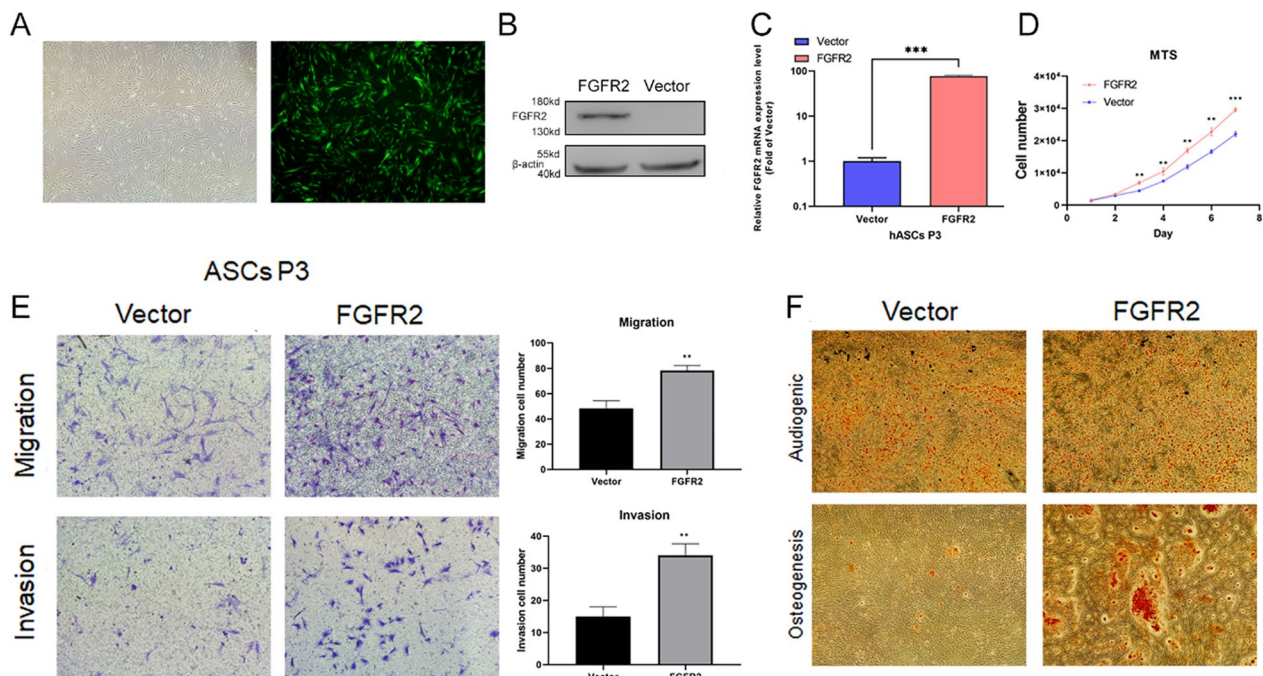


Fig. 4 **A** ADSCs cells under white light and fluorescence; **B, C** Partial size of protein and mRNA expression levels of overexpressed FGFR2; **D, E** proliferation, migration and invasion ability of FGFR2 ctrl and OE ADSCs; **F** Osteogenic and adipogenic differentiation capacity of FGFR2 ctrl and OE ADSCs. *******, < 0.01; ********, < 0.001

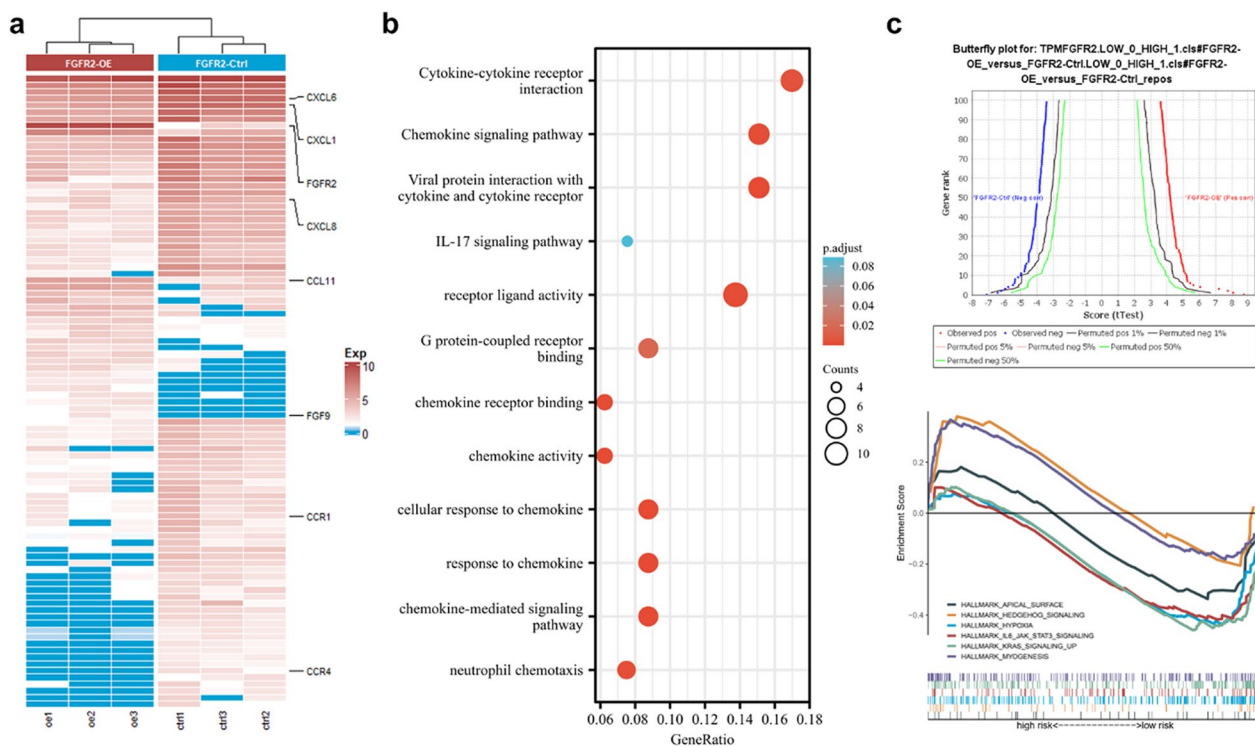


Fig. 5 **A** Differential gene heatmap between two groups; **B** KEGG enrichment analyses of the differential genes; **C** GSEA enrichment analyses of the two groups

group was duplicated from 3 month/Negative control group, and the magnified insert of 3 month/FGFR2 vector group was incorrect. The 1 month/FGFR2 OE group and 3 month/FGFR2 ctrl (vector) group were misplaced and have been swapped. The authors provided the correct images to replace these erroneous ones.

In Additional file 1: Fig. S1A, due to the confusion of DMBC and SMBC in the related study, the 30-day degradation images of SMBC was duplicated from DMBC-30 day image in Additional file 1: Fig. S2 in the team's previous publication [2]. So the authors corrected the 30-day degradation image of SMBC. And in Additional

file 1: Fig. S1B, the BC/7 day image was duplicated from the SBC/100 um image in Fig. 2A. And for Additional file 1: Fig. S1B, although the relevant experimental material (e.g. SMBC/0 day) is a further representation of the pictures in Fig. 2, to eliminate the misunderstanding of repeated use of pictures, the authors replaced the relevant pictures in Additional file 1: Fig. S1B with the results of parallel experiments.

The authors apologize for the delay in finding the error in the above figures. The errors did not affect the results, and all relevant raw data were verified by the editorial team.

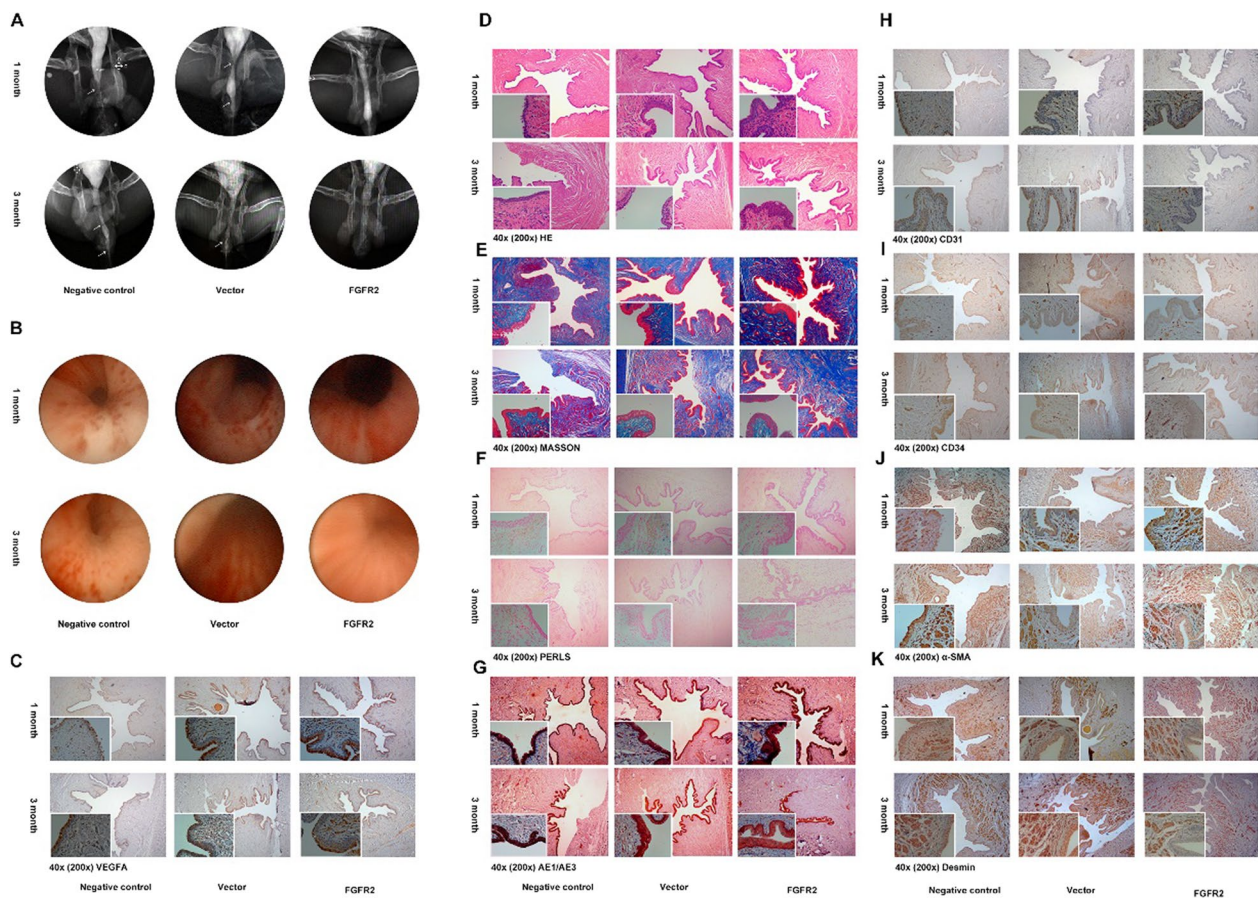


Fig. 7 **A, B** Urography and urethroscopy of Negative controls, FGFR2 ctrl and FGFR2 OE groups at 1 month and 3 months after surgery; **C** VEGFA; **D** HE; **E** MASSON; **F** Prussian blue; **G** AE1/AE3; **H** CD31; **I** CD34; **J** alpha-SMA; **K** Desmin of Negative controls, FGFR2 ctrl and FGFR2 OE groups at 1 month and 3 months after surgery

Supplementary Information

The online version contains supplementary material available at <https://doi.org/10.1186/s13287-023-03541-y>.

Additional file 1. Figure S1. (A) In vitro degradation of BC and SMBC materials at 0 and 30 days. (B) Scanning electron microscopy microstructure of BC and SMBC materials at 0 and 7 days of in vitro degradation (100 μ m)

Publisher's Note

Springer Nature remains neutral with regard to jurisdictional claims in published maps and institutional affiliations.

Published online: 27 February 2024

References

- Zhu Z, et al. Clinical application of a double-modified sulfated bacterial cellulose scaffold material loaded with FGFR2-modified adipose-derived stem cells in urethral reconstruction. *Stem Cell Res Ther.* 2022;13(1):463.
- Yang J, et al. Double-modified bacterial cellulose/soy protein isolate composites by laser hole forming and selective oxidation used for urethral repair. *Biomacromol.* 2022;23(1):291–302.