

RESEARCH

Open Access



The effects of melatonin on colonization of neonate spermatogonial mouse stem cells in a three-dimensional soft agar culture system

Shadan Navid¹, Mehdi Abbasi^{1*} and Yumi Hoshino²

Abstract

Background: Melatonin is a pleiotropic hormone with powerful antioxidant activity both in vivo and in vitro. The present study aimed to investigate the effects of melatonin on the proliferation efficiency of neonatal mouse spermatogonial stem cells (SSCs) using a three-dimensional soft agar culture system (SACS) which has the capacity to induce development of SSCs similar to in vivo conditions.

Methods: SSCs were isolated from testes of neonate mice and their purities were assessed by flow cytometry using PLZF antibody. Isolated testicular cells were cultured in the upper layer of the SACS in α MEM medium in the absence or presence of melatonin extract for 4 weeks.

Results: The identity of colonies was confirmed by alkaline phosphatase staining and immunocytochemistry using PLZF and $\alpha 6$ integrin antibodies. The number and diameter of colonies of SSCs in the upper layer were evaluated at days 14 and 28 of culture. The number and diameter of colonies of SSCs were significantly higher in the melatonin group compared with the control group. The levels of expression of ID-4 and Plzf, unlike c-kit, were significantly higher in the melatonin group than in the control group.

Conclusions: Results of the present study show that supplementation of the culture medium (SACS) with 100 μ M melatonin significantly decreased reactive oxygen species (ROS) production in the treated group compared with the control group, and increased SSC proliferation.

Keywords: Spermatogonial stem cell, Melatonin, Colonization, Three-dimensional soft agar culture system, Proliferation

Background

Spermatogonial stem cells (SSCs) are germline precursor cells with the potential to self-renew and generate differentiated germ cells which have the capability of producing progeny cells that form sperms [1]. A paucity of these stem cells in the mature testis has limited their isolation for in vitro studies [2]. In addition, long-term chemotherapy or radiation therapy in cancer patients has a devastating impact on these cells and can result in male infertility after the treatment. Therefore, methods for efficient in vitro proliferation of SSCs could play a

critical role in sperm preservation and management of infertility, particularly among cancer survivors [3, 4]. Recent investigations have focused on the factors associated with the proliferation of cultured SSCs, such as leukemia inhibitory factor (LIF) [5, 6], glia cell line-derived neurotrophic factor (GDNF) [5, 7], basic fibroblast growth factor [5, 8], and stem cell factor [9, 10]. All of these factors have been found to play crucial roles in the development of SSCs in vitro. However, most of these experiments commonly investigated two-dimensional cell culture systems using culture dishes or flasks [11–13]. The main disadvantage of the two-dimensional model is the lack of metabolic and proliferative gradients similar to the natural SSC niche. In a three-dimensional culture system, Sertoli cells proliferate and create a monolayer of

* Correspondence: abbasima@tums.ac.ir

¹Department of Anatomy, School of Medicine, Tehran University of Medical Sciences, Tehran, Iran

Full list of author information is available at the end of the article



cells which forms a feeder layer on top of which SSCs colonies are formed [14]. It has been shown that three-dimensional culture systems improve cell proliferation [15]. Some studies have also demonstrated the importance of a three-dimensional structure on the proliferation and differentiation of animal and human SSCs [15–17]. The soft agar culture system (SACS) is a qualitative, three-dimensional cell culture structure that was first used for clonal expansion of bone marrow cells and exploration of factors that are associated with the regulation of their proliferation and differentiation [18, 19]. In 2008, Stukenborg et al. published a paper in which they used SACS as a novel approach to study factors involved in the regulation of the proliferation and differentiation of SSCs. This culture system provides a microenvironment similar to *in vivo* conditions and mimics some aspects of the natural three-dimensional environment to which the SSCs are exposed [15]. Melatonin (N-acetyl-5-methoxytryptamine) is considered as an important hormone with antioxidant, immune response, cell signaling, and neuroprotective properties [20, 21]. A normal physiological metabolism of cells generates reactive oxygen species (ROS), especially in the mitochondria, which can have adverse effects on cell signaling involved in the regulation of proliferation and survival [22]. Melatonin plays a critical role in reducing ROS production in cells, and inhibits a potential DNA mutation resulting from oxidative damage [23]. Similarly, Cruz et al. found that the amphiphilic nature of melatonin has an important implication in the protection of mammalian gametes and embryos from free radical-mediated oxidative damage and cellular death *in vitro* [24]. Melatonin receptors (MT1, MT2) are G protein coupled receptors. Several reports have indicated the expression of melatonin receptors in rat, mouse, sheep, bovine, and human Sertoli cells [25–28]. In this study, we obtained SSCs from the neonate mouse using two-step enzymatic digestion. The goal of the present study was to investigate the effects of melatonin (antioxidant) supplementation to the SACS culture medium containing LIF and GDNF on the proliferation of neonate mouse SSCs. Our findings show that SACS, along with the novel innovative medium used in this study, inhibits the release of free radicals during *in vitro* culture of SSCs and provides a promising strategy for the expansion of SSCs; the survival rate of SSCs was enhanced during a 4-week culture period using melatonin as an important antioxidant in the culture medium.

Method

Animals

Three- to 6-day-old NMRI (National Medical Research Institute) male mice were maintained under standard conditions. Animal experiments in this study were approved by the ethics committee of Tehran University of Medical Sciences in accordance with the university's guidelines.

Isolation of neonatal testis cells

Testicular cells were obtained from 3- to 6-day-old NMRI male mice. Testes were removed from the scrotum and tunica albuginea was removed to obtain the testis tissue. The testis tissues were cut into small pieces and transferred to the digestion solution containing collagenase type IV (1 mg/ml; Sigma, Germany), DNase (10 µg/ml; Sigma, Germany), and hyaluronidase (0.5 mg/ml; Sigma, Germany) for 20 min at 37 °C in a 5% CO₂ incubator. Cells were dispersed by pipetting every 2–5 min until the tubules were separated. The dispersed cells were centrifuged at 1500 g for 5 min and then washed with phosphate-buffered saline (PBS). The second step of enzymatic digestion was carried out using the same procedure and enzymes (15 min). The isolated cells were washed again with PBS [29].

Cell viability

The viability of testicular cells was assessed by methylthiazoltetrazolium (MTT; Sigma, Germany) before and after SSC culture in the SACS. Initially, the soft upper layer was removed and the cell pellet at the bottom of the 15-ml falcon tube was obtained by pipetting several times with PBS (heated to 37 °C). Following each pipetting, centrifugation was performed at 1500 g for 5 min. The isolated cells were counted using a hemocytometer. Finally, the cells were transferred into a 96-well culture plate with each well containing a density of 20×10^3 cells per well per 200 µl; 400 µl MEM and 40 µl MTT were added to each well and incubated for 4 h at 37 °C in a 5% CO₂ incubator. Following the incubation, the medium was replaced with 400 µl dimethyl sulfoxide (DMSO; 1.4 M; Sigma, Germany), and the cells were kept for 30 min at room temperature. The optical density (OD) of the plate was measured at 540 nm with the microplate reader.

Intracellular ROS measurement

The general oxidative stress indicator CM-H2DCFDA was used for the detection of intracellular ROS production. DCFDA (10 ml; Sigma, Life Technologies C6827) was added to the cells and then incubated at 37 °C for 25 min. The DCFDA fluorescent probe reacts with intracellular H₂O₂ to generate fluorescence emission that can be detected by flow cytometry. Measurement of intracellular H₂O₂ production in SACS, before and after culture, was carried out by flow cytometry using DCFDA. The cells were washed twice with PBS and then centrifuged at 2500 g for 5 min. Green fluorescence emission was measured between 500 and 530 nm using flow cytometry [30].

Flow cytometry

The efficiency and purity of the isolated SSCs were quantitatively assessed by flow cytometry. The two-step

enzymatic digestion protocol yielded a single-cell suspension from 3- to 6-day-old male mice. The majority of these cells were SSCs. The cell suspension (density of 2×10^5 cells/cm²) was transferred to a petri dish coated with gelatin and maintained for 24 h at 37 °C in a 5% CO₂ incubator. The coated dish was then washed twice with PBS and centrifuged at 1500 g for 5 min. To assess the cellular enrichment percentage after the placement of the gelatin-coated dish, flow cytometry was performed by applying standard procedures and using a PLZF (promyelocytic leukemia zinc finger protein) antibody. Following permeabilization with 0.4% Triton X100 (Sigma), 10 µl of primary antibody (anti-PLZF antibody; Abcam, rabbit polyclonal to plzf) was added to the cells for 1 h at room temperature. The dish was again washed twice with 1 ml PBS, and 10 µl of secondary antibody (donkey anti-rabbit; Abcam) conjugated with fluorescein isothiocyanate (FITC) was added (1 h at 4 °C). In the control cells, the primary antibody was omitted [31].

SACS

The SSC culture was prepared according to the procedure used by Stukenborg et al. [15]. The SACS was composed of two layers: the soft layer (upper) and solid layer (lower). The single-cell suspension was added to the soft upper layer (0.37% (w/v) agar) established on the solid lower layer (0.5% (w/v) agar), and cultured in a 24-well plate. The cells (10^6 cells per well per 200 µl) were cultured for 4 weeks in the upper layer of the soft agar medium consisting of 0.37% agar plus the basic culture medium α MEM containing 10% fetal bovine serum (FBS; Sigma, Germany), 1 \times nonessential amino acids (Invitrogen, USA), 0.1 mM 2-mercaptoethanol (Sigma, Germany), 100 U/ml penicillin (Sigma, Germany), 100 µg/ml streptomycin (Sigma, Germany), 10^3 U/ml human recombinant leukemia inhibitory factor (LIF; B&D, USA), and 10 µg/ml glial cell line-derived neurotrophic factor (GDNF; R&D, USA). The final volume of the upper layer was 200 µl. The solid lower layer had 0.5% (w/v) agar plus the basic culture medium α MEM containing 10% fetal bovine serum only. Prior to culturing, the solid layer was formed and kept for 2 h at 37 °C in a 5% CO₂ incubator. The final volume of the lower layer was 800 µl. Cell suspension was added to the α MEM culture medium before mixing with the agar. The agar and the α MEM culture medium were mixed at 37 °C and the cells settled on top of the solid lower layer. In the treatment group, melatonin at 50 µM or 100 µM (Sigma) was added to the basic medium culture [32]. All culture experiments were maintained in standard cell culture incubators at 37 °C and 5% CO₂. At the end of days 14 and 28 (the second and fourth week after seeding in the two groups), the diameter and number of colonies formed were measured. We separately counted

the colonies in each well of the same group (4–6 wells in each group). The culture medium was replaced every 3 days. Three techniques were used to confirm the presence of colonies of SSCs: alkaline phosphatase staining, immunocytochemistry using plzf and $\alpha 6$ integrin antibodies, and the level of expression of the undifferentiated genes ID-4 and Plzf using real-time polymerase chain reaction (PCR).

Alkaline phosphatase staining

Alkaline phosphatase activity was assayed by Fast Red TR/Naphthol AS-MX Tablets (Sigma USA, F4648) according to the manufacturer's instructions. Alkaline dye was briefly made by dissolving a Tris tablet in 1 ml of deionized water to form a Tris buffer, after which a Fast-Red TR/Naphthol AS-MX Tablet was added. The cells were added to the alkaline dye and incubated at 37 °C for 30 min. Subsequently, the cells were observed under an inverted microscope.

Immunocytochemistry for characterization of SSC colonies

Immunocytochemical detection of the PLZF antibody was used to identify the colonies formed by the SSCs. After fixation with 4% paraformaldehyde for 24 h, the cells were permeabilized with 0.4% Triton X100 (Sigma) and then blocked in 10% goat serum (Sigma). The cells were then incubated with two primary antibodies, rabbit polyclonal anti-PLZF (1:100; Abcam) and rat polyclonal anti- $\alpha 6$ -integrin (1:100; Sigma-Aldrich), for 2 h at 37 °C. After 2 h of incubation, the cells were washed with PBS and the secondary antibody, donkey anti-rabbit or anti-rat labeled with FITC and diluted at 1:200 (Sigma), was added for 3 h. Control cells were treated under similar conditions except for the removal of the primary antibodies. Nuclei were stained with 4,6-diamidino-2-phenylindole (DAPI; 1 µg/ml; Sigma, Germany).

Real-time PCR

After 4 weeks of culture, the expression levels of promyelocytic leukaemia zinc finger protein (*Plzf*, undifferentiated gene), DNA-binding protein inhibitor (*ID4*, undifferentiated gene), and tyrosine-protein kinase Kit (*c-kit*, differentiated gene) were measured by real-time PCR. Total RNA was extracted by Trizol reagent (Ready Mini Kit, Qiagen, USA) according to the manufacturer's instructions. Total RNA (1 µg) was applied for cDNA synthesis using a cDNA synthesis kit (Transcript First Strand cDNA Synt, Roche, USA) according to the manufacturer's guidelines. Real-time PCR was carried out in 40 reaction amplification cycles, and Applied Bioscience 7500 fast with SYBR Green detection was used for the analysis. Melt curve analysis was performed after each run to detect the presence of nonspecific PCR

products and primer dimers. All samples were normalized against glyceraldehyde-3-phosphate dehydrogenase (GAPDH) (internal control), and the relative quantification of gene expression was determined using the comparative CT method ($\Delta\Delta\text{CT}$). Primer sequences for RT-PCR are listed in Table 1.

Statistical analysis

Results are expressed as the mean \pm standard deviation (SD). Statistical analysis was performed using the unpaired *t* test for the gene expression studies. The comparison of the diameter and number of colonies, cell viability, and ROS measurements between the test groups were performed by repeated analysis of variance (ANOVA) followed by a Tukey post-hoc test for internal comparisons. $P \leq 0.05$ was considered statistically significant.

Results

Assessment of the purification of SSCs by flow cytometry

A flow cytometry technique was carried out on the supernatant after the placement of the gelatin-coated dish to assess the percentage of purity of SSCs following the two-step enzymatic digestion. We observed that 96.1% of all cells expressed Plzf (Fig. 1) which is one of the most suitable markers for the isolation of undifferentiated SSCs [33]. Other cells of the testes, predominantly Sertoli cells, that were transferred into the SACS played important roles in the formation of colonies of SSCs.

Effect of SACS on the viability of SSCs

The MTT assay was used to evaluate the viability of cells. The results show that the majority of the cells ($91.32 \pm 4.2\%$) were viable immediately after the two-step enzymatic digestion ($P \leq 0.05$). After 4 weeks of culture of SSCs in the SACS, the survival rates of the cells in the control group ($80.13 \pm 9\%$) and 50 μM melatonin group ($80.57 \pm 5.8\%$) were not significantly different compared with the fresh cells group ($79.8 \pm 8\%$; $P \geq 0.05$). However, cell viability was significantly ($P \leq 0.05$) increased when 100 μM melatonin ($91.11 \pm 4.3\%$) was added to the culture medium compared with the control ($80.13 \pm 9\%$)

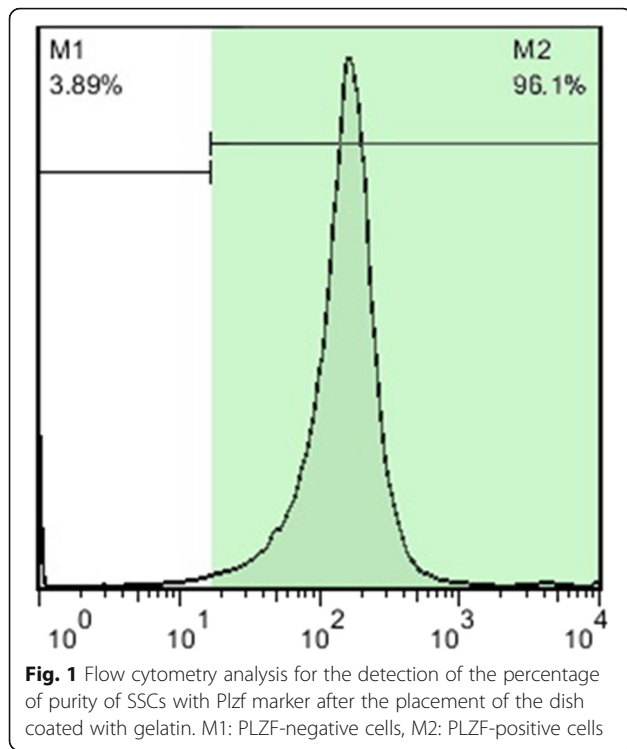
group. This concentration was thus used for further studies (Fig. 2).

Evaluation of SSC development using the SACS

After the two-step enzymatic digestion, we cultured the testicular cells for 4 weeks. Isolated testicular cells were cultured in the upper layer of the SACS. Distinct colonies appeared in the upper layer of the SACS between days 9 and 11 during the culture period. The diameter and number of colonies in the upper layer were measured at the end of second and fourth week (days 14 and 28 after seeding in the two groups) (Fig. 3a–d). SSC colonies appeared between days 9 and 11 in the experimental group, and on day 13 in the control group. Alkaline phosphatase activity of the isolated colonies strongly suggests a well-accepted embryonic characterization of the stem cells (Fig. 3e). Moreover, for the identification of colonies of SSCs in the SACS we detected the expression levels of PLZF and $\alpha 6$ integrin by immunocytochemistry, and this was confirmed by the presence of PLZF protein in the nuclei and $\alpha 6$ integrin protein in SSC cytoplasm, respectively (Fig. 4). The number and diameter of colonies in the upper layer were compared between the groups on days 14 and 28 of culture. In the colony assay, the number and diameter of colonies in the control group were 2.57 ± 1.2 and $150.7 \pm 39.5 \mu\text{m}$, respectively, at the end of the second week, and 6.07 ± 1.6 and $407.7 \pm 77.3 \mu\text{m}$, respectively, at the end of the fourth week. In the experimental group, the number and diameter of colonies were 3.57 ± 0.9 and $329.9 \pm 76.5 \mu\text{m}$, respectively, at the end of the second week, and 9.28 ± 1.7 and $602.8 \pm 179.5 \mu\text{m}$, respectively, at the end of the fourth week. The number and diameter of colonies formed in the experimental group after the fourth week of culture were significantly higher than in the control group ($P \leq 0.001$), although the differences were not significant at the end of the second week. These results show that melatonin supplementation in the culture medium, along with SACS, can mimic in vivo conditions and has a significant effect on the diameter and number of SSC colonies (Fig. 5).

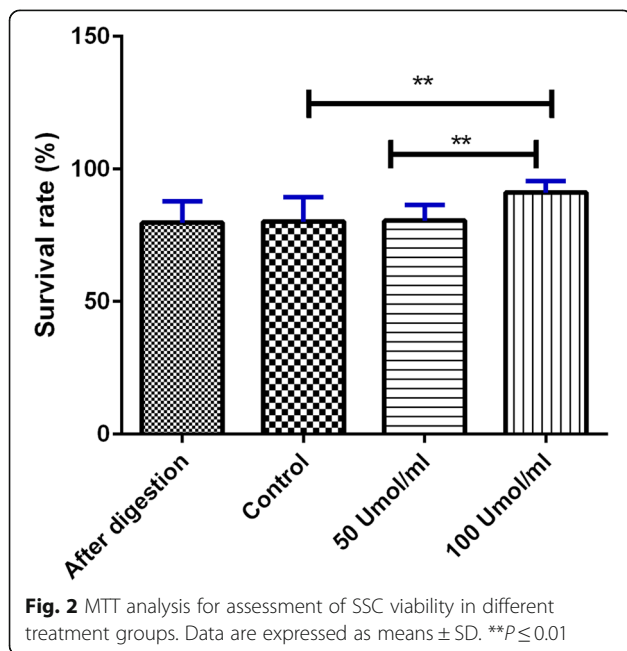
Table 1 The primer sequences for ID4, Plzf, c-kit, and GAPDH genes

Gene name	Sequence	Product size (bp)	Annealing temperature ($^{\circ}\text{C}$)
ID4	Forward: 5'- TCCCGCCCAACAAGAAAGTC -3'	102	60.54
	Reverse: 5'- TCAGCAAAGCAGGGTGAGTC-3'		
Plzf	Forward: 5'- CGTTGGGGTTCAGCTAGAAAG -3'	301	57.14
	Reverse: 5'- CACCATGATGACCACATCGC-3'		
c-kit	Forward: 5'- AACAAACAAGAGCAAATCCAGG -3'	200	57.67
	Reverse: 5'- GGAAGTTGCGTCGGGTCTAT -3'		
GAPDH	Forward: 5'-AGCAAGGACACTGAGCAAGAG-3'	151	60.35
	Reverse: 5'- TCGTTCCTCTGATCGTTTC -3'		



Gene expression analysis

Expression levels of Plzf, ID-4, and c-kit were examined using real-time PCR for the evaluation of the proliferation of SSCs in the SACS. The results indicate that the levels of Plzf and ID-4 expression in the melatonin group were significantly higher than in the control group (Plzf, $P \leq 0.001$ vs. control; ID-4, $P \leq 0.01$ vs. control).



C-kit gene had a lower level of expression in the melatonin group compared with the control group; however, the difference was not significant ($P \geq 0.05$) (Fig. 6).

Flow cytometric evaluation of intracellular ROS production

To measure intracellular ROS production, we used DCFDA which is a specific probe for intracellular H_2O_2 detection. Measurement of intracellular ROS production before and after SACS was carried out by flow cytometry using the DCFDA probe. ROS production in the fresh group ($25.7 \pm 0.8\%$) was significantly ($P \leq 0.0001$) higher compared with the control ($10.67 \pm 0.7\%$) and melatonin groups ($6.46 \pm 0.5\%$) (Fig. 7).

Discussion

The present study makes noteworthy contributions by providing valuable tools for the in vitro investigation of SSC proliferation which can be useful in the treatment of male infertility. In the present study, we developed SSC culture in SACS along with melatonin supplementation as the optimal culture protocol which prevented the release of free radicals during spermatogonial stem cell culture in vitro. In a previous study, the number and diameter of colonies increased in a group treated with melatonin in SACS compared with a two-dimensional culture supplemented with date palm pollen (*Phoenix dactylifera*), which confirms our study describing a successive maturation of pre-meiotic SSCs in the culture system. Neonatal mouse SSCs were isolated and enriched with Plzf antibody, which was also used to confirm SSC colonies in the SACS. Plzf antibody has been used in many studies as an indicator for SSC colony detection and purification studies [14, 34]. Several other studies have used different markers for the isolation and detection of these cells, including GFR α 1, ID-4, PAX7, etc. [35–37]. However, there is no strong evidence for the efficient isolation of SSCs using these markers, and no efficient and specific SSC markers have yet been identified [38].

The SACS consisted of two phases of different agar concentrations: a softer upper layer and a more solid lower layer. The synthesis of SACS was performed according to the procedure applied by Stukenborg et al. [15].

In this study, we added SSCs to the upper layer of the agar system. Similarly, Elhija et al. [17], Stukenborg et al. [15], and Huleihel et al. [39] reported the addition of SSCs (10^6 cells per well per 200 μ l) to the upper layer of the agar system before culturing in a 24-well plate during their investigations on SSC proliferation. Unlike these studies, we only used a flow cytometry technique for the assessment of the purity of SSCs using Plzf antibody; 96.1% of all cells expressed this antibody. Other cells of the testes, especially Sertoli cells, were

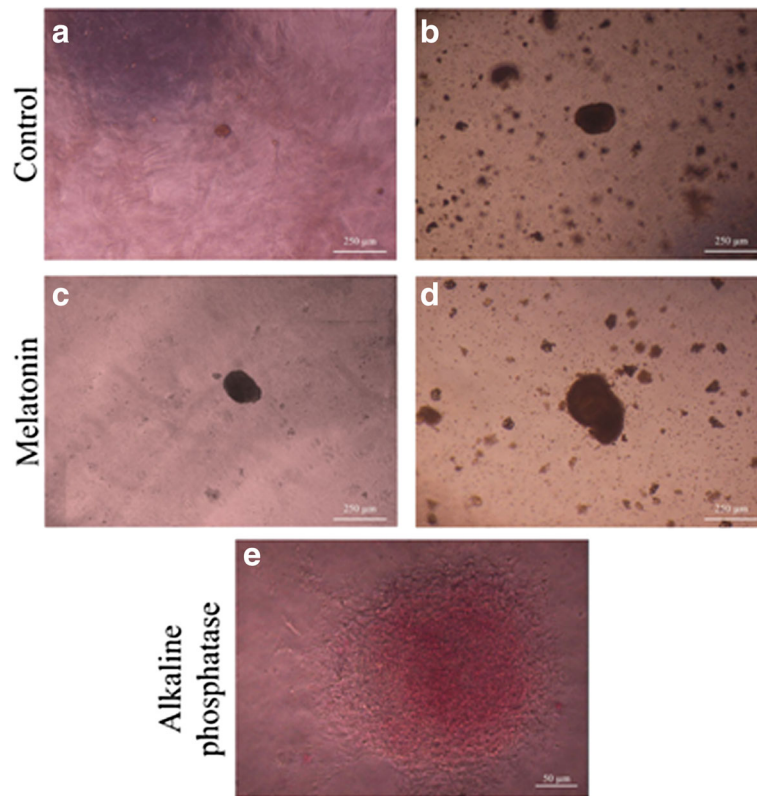


Fig. 3 Microscopic morphology of SSCs derived from neonatal male mice (five mice at a time in each group). Each type of experiment has three replicates. The sizes of the colonies are shown at the end of the second week (a, c) and the end of the fourth week (b, d) of SACS, as well as being positive for alkaline phosphatase activity (e). After cultivation of SSCs, the diameter and number of colonies increased in both groups, particularly in the experimental (melatonin) group. All the tests performed at least five times

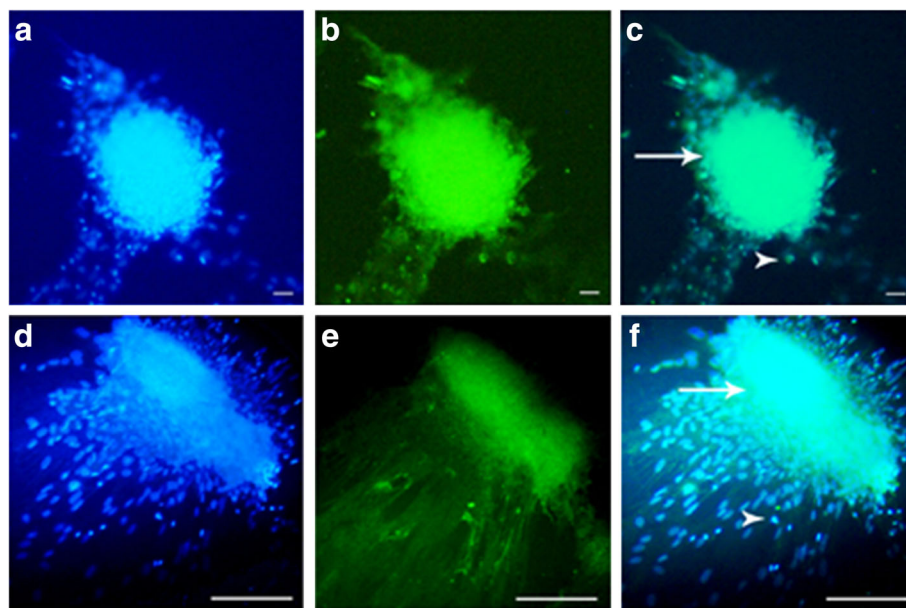
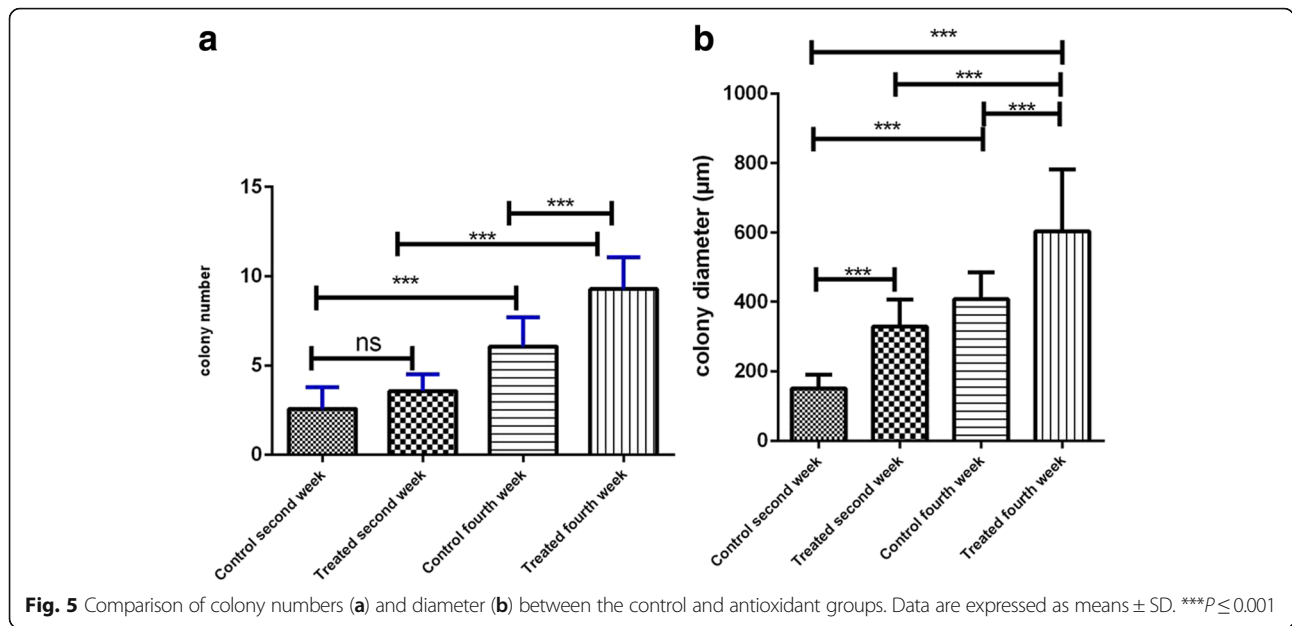
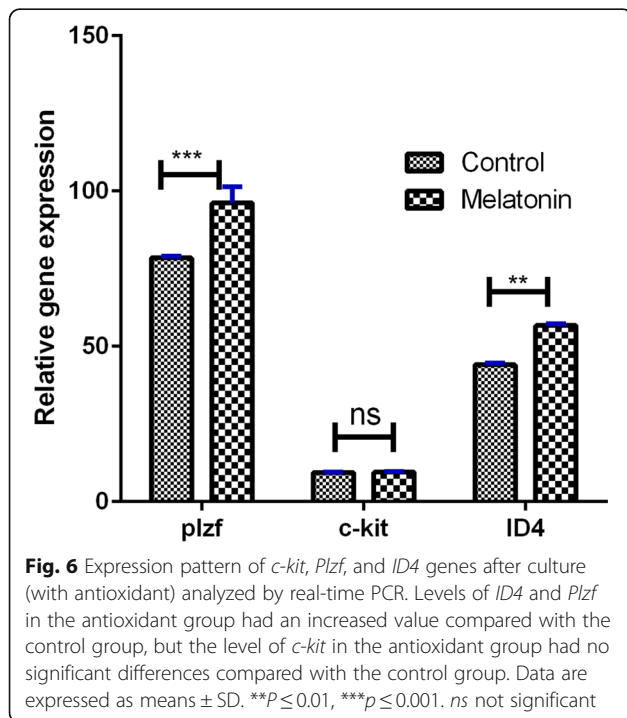


Fig. 4 Immunofluorescent staining of SSC colonies. SSCs were positive for Plzf in the nuclei and α6 integrin in the cytoplasm (green) (b, e), and nuclei were stained with DAPI (blue) (a, d). c, f A merge of Plzf and α6 integrin DAPI. A single SSC cell (arrowhead) proliferated and created a colony of SSCs (arrow). Scale bars = 50 μm



transferred into the upper layer of the SACS which shows that these cells have positive effects on development and colony formation in SSCs [15]. Sertoli cells are involved in the regulation of proliferation and differentiation of SSCs, particularly through paracrine- and endocrine-mediated signaling pathways. Sertoli cell growth factor, GDNF, fibroblast growth factor 2 (FGF2), Sertoli cell transcription factor, ETS variant 5, nociceptin, neuregulin 1 (NRG1), and androgen receptor (AR)

have been identified as the most important upstream factors that regulate SSC self-renewal and spermatocyte meiosis [40]. Recent studies have demonstrated the expression of melatonin receptors (MT1 and MT2) in Sertoli cells [25] and SSCs [28]. Thus, the fact that melatonin, in addition to its antioxidant activity, can have complex biological functions through its receptor appears to be justified. Based on these findings, it seems likely that melatonin, through its receptor on Sertoli cells or SSCs, can directly play a role in the proliferation of SSCs. The isolated cells were cultured in SACS in the absence or presence of melatonin extract. Their viability was evaluated by MTT assay. In this study, we observed a dose-dependent (100 μ M) activity of melatonin on SSCs in culture. As previously published, the presence of melatonin in a cell culture can increase the number of viable cells [20, 28]. We added melatonin to the basic culture medium in the SACS, which yielded an increase in cell viability up to 90%. Our results also show that the number of viable cells in the SACS supplemented with melatonin was higher compared with a two-dimensional culture system supplemented with catalase or alpha-tocopherol before culture [41]. We also examined the effects of SACS in combination with LIF and GDNF on the proliferation of SSCs. Although several reports have described culturing SSCs in SACS, they have most commonly focused on stem cell differentiation [15, 17, 39]. Previous studies have shown that some growth factors, most notably GDNF, can have a long-term positive effect on the maintenance of SSCs and may also stimulate division of SSCs [7, 12, 42, 43]. Other studies reported that LIF is an essential factor for maintaining pluripotency and the self-renewing capacity of embryonic stem



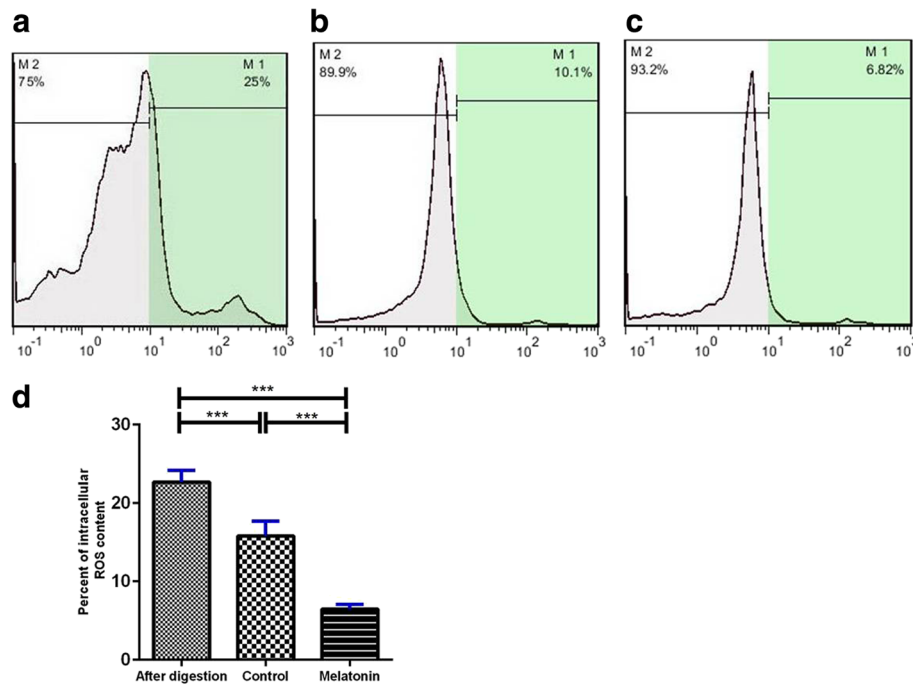


Fig. 7 Flow cytometry analysis for the detection of reactive oxygen species (ROS) in different groups. **a** Fresh group, **b** control group (without melatonin), **c** experimental group (melatonin 100 μM). M2: DCFDA-negative cells, M1: DCFDA-positive cells. **d** ROS production of SSCs before and after SACS analyzed by flow cytometry. Note the significantly lower production of ROS after SACS with 100 μM melatonin compared to the control group. Data are expressed as means ± SD. *** $P \leq 0.0001$

cells [44] and SSCs [45]. On the other hand, the presence of LIF in the culture medium inhibited meiotic gene expression and increased the percentage of alkaline phosphatase-positive cells. Previous studies have also demonstrated that melatonin can play different roles in the cells of the body such as cell signaling, protection of fatty acids from oxidation, oncostatic action, and anti-apoptotic and anti-aging properties in many cells [21, 46]. In recent years, much attention has focused on the role of melatonin as an antioxidant. Melatonin, as a free radical scavenger, plays a vital role in the reduction of ROS production, and prevents cellular death and potential DNA mutations resulting from oxidative damage in culture systems [20, 23, 26, 47–49]. One of the most common intracellular ROS molecules is H₂O₂ [50]. We thus evaluated intracellular H₂O₂ content using a DCFDA-specific probe. Our findings demonstrate that supplementation with melatonin in SACS can contribute greatly to the prevention of the propagation of lipid peroxidation in SSC membranes caused by ROS production, and can protect SSCs from the adverse effects of these free radicals. Conversely, Morimoto et al. [51] reported that ROS formation plays a pivotal role in SSC self-renewal via the activation of stress kinases p38 mitogen-activated protein kinase (MAPK) and c-Jun N-terminal kinase (JNK) pathways. They suggested that the presence

of ROS is somewhat necessary for SSC self-renewal in vivo [51].

In another study, Li et al. [52] claimed that melatonin promotes manganese superoxide dismutase (*MnSOD*) and sirtuin type 1 (*SIRT1*) expression, and therefore promotes busulfan-induced SSC apoptosis in the presence of high concentrations of ROS and p53.

A number of studies have demonstrated that the addition of melatonin to culture medium can reduce the potential effects of ROS-induced cell stress in cells such as oocyte and adipose-derived stem cells (ASCs) [48, 49]. Gholami et al. [53] carried out a number of investigations on the effects of melatonin on SSC transplantation in azoospermic mice. They showed that melatonin can improve the structure of testis tissue. In another study conducted by the same researchers [54], they demonstrated positive effects of melatonin supplementation in vitrified-thawed testicular germ cells of neonatal mice. They indicated that melatonin can induce cell proliferation in normal cells and apoptosis in damaged cells. Similarly, Niu et al. [55] found that adding melatonin to the culture medium of goat SSCs could increase SSC proliferation by stimulating the production of GDNF in the Sertoli cell. Measuring the number and diameter of colonies of SSCs can be used as morphological criteria in in vitro studies [41, 56]. In another study, we investigated the

effect of melatonin on SSCs in a two-dimensional culture, and emphasized on the importance of adding melatonin to the culture medium as an antioxidant. We also showed that the culture of SSCs in SACS is more successful compared to the two-dimensional culture system [57].

In this study, we observed that the number and diameter of the colonies increased at the end of each week of culture in the SACS in both groups. The most striking aspect of our results is the vital antioxidant role of melatonin in the culture of SSCs in the SACS which provided protection against lipid peroxidation. Similar to our results, Elhija et al. [17] isolated colonies in the upper layer of SACS after 14 and 28 days of culture and classified them according to their size. In contrast to our findings, Eslahi et al. [16] indicated that the number and diameter of the colonies of SSCs in a poly-L-lactic acid (PLLA) nanofiber scaffold decreased significantly after the first, second, and third weeks of culture compared with the control groups (culture of SSCs not seeded on PLLA). In the present study, colonies were composed of cells that expressed and stained positive for the mitosis markers PLZF and $\alpha 6$ integrin. Moreover, we used alkaline phosphatase staining to evaluate the colonies of SSCs for alkaline phosphatase activity. It is well known that PLZF and $\alpha 6$ integrin are markers for spermatogonial stem/progenitor cells in many species [14, 16, 45].

After the fourth week of culture, we analyzed ID-4, Plzf, and c-kit gene expression levels. Our data clearly show that melatonin supplementation can increase the proliferation rate of SSCs. The level of PLZF and ID-4 (undifferentiated genes) expression in the melatonin group were significantly higher than in the control group, whereas the level of c-kit (differentiated gene) expression decreased in the melatonin group. In support of our results, Aliakbari et al. also reported a decrease in c-kit expression after they cultured post-thawed SSCs treated with antioxidants in both control and treated groups [41]. Our findings are in line with the results of other previous studies [14, 16, 58].

Results of this research suggest several practical applications. We emphasize the importance of adding melatonin to the culture medium as an antioxidant.

Conclusions

We conclude that the presence of LIF and GDNF in SACS, along with melatonin supplementation in the basic culture medium, likely creates a testis-like micro-environment in which proliferation of SSCs is promoted. On the other hand, the major limitation of this study was the inability to isolate live cells from the SACS. Therefore, we could not investigate later stages, and further study is needed to evaluate their differential fertility potential which is the gold standard for the management of those suffering from infertility.

Abbreviations

c-kit: Tyrosine-protein kinase Kit; FBS: Fetal bovine serum; FITC: Fluorescein isothiocyanate; GDNF: Glia cell line-derived neurotrophic factor; ID-4: DNA-binding protein inhibitor; LIF: Leukemia inhibitory factor; MTT: Methylthiazolotetrazolium; NMRl: National Medical Research Institute; PBS: Phosphate-buffered saline; PCR: Polymerase chain reaction; PLZF: Promyelocytic leukemia zinc finger protein; ROS: Reactive oxygen species; SACS: Soft agar culture system; SSC: Spermatogonial stem cell

Acknowledgments

The authors thank the staff of Tehran University of Medical Sciences for animal care.

Funding

This is an original article which has been supported by Tehran University of Medical Sciences (grant no. 28042). We are grateful for the funding support provided by the University. The results described in this article were part of a student thesis.

Availability of data and materials

All analyzed data are available in the manuscript or supplementary information. Raw data or other materials produced in the conduct of these studies are available from the authors to qualified investigators upon request.

Authors' contributions

SN conceived of the study, performed animal treatments, collected and analyzed specimens, and analyzed/interpreted data. SN analyzed the real-time PCR. SN and YH conceived of and oversaw the study, interpreted data, assisted with figure preparation, and wrote the manuscript. All authors read and approved the final manuscript.

Authors' information

Not applicable.

Ethics approval

Animal experiments were approved by the Ethics Committee of Tehran University of Medical Sciences and all procedures were performed in accordance with the university's guidelines. In the present work, we used an animal model considering all the rights based on the Ethical Committee of the Medical Faculty of Tehran University.

Consent for publication

Not applicable.

Competing interests

The authors declare that they have no competing interests.

Publisher's note

Springer Nature remains neutral with regard to jurisdictional claims in published maps and institutional affiliations.

Author details

¹Department of Anatomy, School of Medicine, Tehran University of Medical Sciences, Tehran, Iran. ²Laboratory of Reproductive Endocrinology, Graduate School of Biosphere Science, Hiroshima University, Higashi-Hiroshima, Kagamiyama 1-4-4Hiroshima 739-8528, Japan.

Received: 7 August 2017 Revised: 18 September 2017

Accepted: 2 October 2017 Published online: 17 October 2017

References

- Aponte PM, et al. Propagation of bovine spermatogonial stem cells in vitro. *Reproduction*. 2008;136(5):543–57.
- Morena AR, et al. Isolation of highly purified type A spermatogonia from prepubertal rat testis. *J Androl*. 1996;17(6):708–17.
- Sadri-Ardekani H, et al. Propagation of human spermatogonial stem cells in vitro. *JAMA*. 2009;302(19):2127–34.
- Liu S, et al. Isolation and characterization of human spermatogonial stem cells. *Reprod Biol Endocrinol*. 2011;9(1):1.

5. Kanatsu-Shinohara M, et al. Long-term proliferation in culture and germline transmission of mouse male germline stem cells. *Biol Reprod*. 2003;69(2):612–6.
6. De Miguel MP, et al. Leukemia inhibitory factor and ciliary neurotrophic factor promote the survival of Sertoli cells and gonocytes in coculture system. *Endocrinology*. 1996;137(5):1885–93.
7. Meng X, et al. Regulation of cell fate decision of undifferentiated spermatogonia by GDNF. *Science*. 2000;287(5457):1489–93.
8. Kubota H, Avarbock MR, Brinster RL. Culture conditions and single growth factors affect fate determination of mouse spermatogonial stem cells. *Biol Reprod*. 2004;71(3):722–31.
9. Allard EK, Blanchard KT, Boekelheide K. Exogenous stem cell factor (SCF) compensates for altered endogenous SCF expression in 2,5-hexanedione-induced testicular atrophy in rats. *Biol Reprod*. 1996;55(1):185–93.
10. Lee J, Boekelheide K, Blanchard KT. Leuprolide, a gonadotropin-releasing hormone agonist, reestablishes spermatogenesis after 2,5-hexanedione-induced irreversible testicular injury in the rat, resulting in normalized stem cell factor expression 1. *Endocrinology*. 1998;139(1):236–44.
11. Kanatsu-Shinohara M, et al. Generation of pluripotent stem cells from neonatal mouse testis. *Cell*. 2004;119(7):1001–12.
12. Kanatsu-Shinohara M, et al. Long-term culture of mouse male germline stem cells under serum- or feeder-free conditions. *Biol Reprod*. 2005;72(4):985–91.
13. Nagano M, et al. Maintenance of mouse male germ line stem cells in vitro. *Biol Reprod*. 2003;68(6):2207–14.
14. Mahaldashtian M, et al. In vitro effects of date palm (*Phoenix dactylifera* L.) pollen on colonization of neonate mouse spermatogonial stem cells. *J Ethnopharmacol*. 2016;186:362–8.
15. Stukenborg JB, et al. Coculture of spermatogonia with somatic cells in a novel three dimensional soft agar culture system. *J Androl*. 2008;29(3):312–29.
16. Eslahi N, et al. The effects of poly L-lactic acid nanofiber scaffold on mouse spermatogonial stem cell culture. *Inter J Nanomedicine*. 2013;8:4563.
17. Elhija MA, et al. Differentiation of murine male germ cells to spermatogonia in a soft agar culture system. *Asian J Androl*. 2011;14:285–93.
18. Lin H, Kuhn C, Kuo T. The Clonal growth of hamster free alveolar cells in soft agar. *J Exp Med*. 1975;142(4):877–86.
19. Horowitz D, King AG. Colorimetric determination of inhibition of hematopoietic progenitor cells in soft agar. *J Immunol Methods*. 2000;244(1):49–58.
20. Anisimov VN, et al. Melatonin as antioxidant, geroprotector and anticarcinogen. *Biochim Biophys Acta*. 2006;1757(5):573–89.
21. Hardeland R, et al. Melatonin—a pleiotropic, orchestrating regulator molecule. *Prog Neurobiol*. 2011;93(3):350–84.
22. Ray PD, Huang B-W, Tsuji Y. Reactive oxygen species (ROS) homeostasis and redox regulation in cellular signaling. *Cell Signal*. 2012;24(5):981–90.
23. He C, et al. Melatonin to ameliorate its function and improve mitochondria synthesize mice oocyte's quality under in vitro conditions. *Inter J Mol Sci*. 2016;17(6):939.
24. Cruz MHC, et al. Role of melatonin on production and preservation of gametes and embryos: a brief review. *Anim Reprod Sci*. 2014;145(3):150–60.
25. Yang W-C, et al. Melatonin regulates the development and function of bovine sertoli cells via its receptors MT1 and MT2. *Anim Reprod Sci*. 2014;147(1):10–6.
26. Chabra A et al. Melatonin ameliorates oxidative stress and reproductive toxicity induced by cyclophosphamide in male mice. *Hum Exp Toxicol*. 2014;33(2):185–95.
27. Liu Y, et al. Melatonin modulates acute testicular damage induced by carbon ions in *r* mice. *Pharmazie*. 2009;64(10):685.
28. Deng SL, et al. Melatonin promotes development of haploid germ cells from early developing spermatogenic cells of Suffolk sheep under in vitro condition. *J Pineal Res*. 2016;60(4):435–47.
29. Guan K, et al. Isolation and cultivation of stem cells from adult mouse testes. *Nat Protoc*. 2009;4(2):143–54.
30. Rhee SG, et al. Methods for detection and measurement of hydrogen peroxide and outside of cells. *Mol Cell*. 2010;29(6):539–49.
31. Baazm M, et al. An improved protocol for reprogramming isolation and culturing of mouse spermatogonial stem cells. *Cell Program*. 2013;15(4):329–36.
32. Moriya T, et al. Melatonin influences the proliferative and differentiative activity of neural stem cells. *J Pineal Res*. 2007;42(4):411–8.
33. Costa GM, et al. Spermatogonial stem cell markers and niche in equids. *PLoS One*. 2012;7(8):e44091.
34. Costoya JA, et al. Essential role of Plzf in maintenance of spermatogonial stem cells. *Nat Genet*. 2004;36(6):653–9.
35. Kumar TR. The quest for male germline stem cell markers: PAX7 gets ID'd. *J Clinical Invest*. 2014;124(10):4219–22.
36. Sun F, et al. Id4 marks spermatogonial stem cells in the mouse testis. *Scientific reports*. 2015;5:17594.
37. Khajavi N, et al. Role of somatic testicular cells during mouse spermatogenesis in three-dimensional collagen gel culture system. *Cell J*. 2014;16(1):79.
38. Dym M, Kokkinaki M, He Z. Spermatogonial stem cells: mouse and human comparisons. *Birth Defects Res C Embryo Today*. 2009;87(1):27–34.
39. Huleihel M, Nourshafeddin S, Plant TM. Application of three-dimensional culture systems to study mammalian spermatogenesis, with an emphasis on the rhesus monkey (*Macaca mulatta*). *Asian J Androl*. 2015;17(6):972.
40. Chen S-R, Liu Y-X. Regulation of spermatogonial stem cell self-renewal and spermatocyte meiosis by sertoli cell signaling. *Reproduction*. 2015;149(4):R159–67.
41. Aliakbari F, et al. Improving the efficacy of cryopreservation of spermatogonia stem cells by antioxidant supplements. *Cell Reprogram*. 2016;18(2):87–95.
42. Kubota H, Avarbock MR, Brinster RL. Growth factors essential for self-renewal and expansion of mouse spermatogonial stem cells. *Proc Natl Acad Sci U S A*. 2004;101(47):16489–94.
43. Ebata KT, et al. Soluble growth factors stimulate spermatogonial stem cell divisions that maintain a stem cell pool and produce progenitors in vitro. *Exp Cell Res*. 2011;317(10):1319–29.
44. Fukunaga N, et al. Leukemia inhibitory factor (LIF) enhances germ cell differentiation from primate embryonic stem cells. *Cell Reprogram*. 2010;12(4):369–76.
45. Zanganeh BM, et al. Co-culture of spermatogonial stem cells with sertoli cells in the presence of testosterone and FSH improved differentiation via up-regulation of post meiotic genes. *Acta Med Iran*. 2013;51(1):1.
46. Millán-Plano S, et al. Melatonin and structurally-related compounds protect synaptosomal membranes from free radical damage. *Inte J Mol Sci*. 2010;11(1):312–28.
47. Bonnefont-Rousselot D, Collin F. Melatonin: action as antioxidant and potential applications in human disease and aging. *Toxicology*. 2010;278(1):55–67.
48. Tan SS, et al. Melatonin protects human adipose-derived stem cells from oxidative stress and cell death. *Archive Plastic Surg*. 2016;43(3):237–41.
49. Maitra SK, Hasan KN. The role of melatonin as a hormone and an antioxidant in the control of fish reproduction. *Front Endocrinol*. 2016;7:38.
50. Murphy MP. How mitochondria produce reactive oxygen species. *Biochemical J*. 2009;417(1):1–13.
51. Morimoto H, et al. ROS are required for mouse spermatogonial stem cell self-renewal. *Cell Stem Cell*. 2013;12(6):774–86.
52. Li B, et al. Melatonin ameliorates busulfan-induced spermatogonial stem cell oxidative apoptosis in mouse testes. *Antioxidant Redox Signal*. 2017.
53. Gholami M, et al. Melatonin improves spermatogonial stem cells transplantation efficiency in azoospermic mice. *Iran J Basic Med Sci*. 2014;17(2):93.
54. Gholami M, et al. Effect of melatonin on the expression of apoptotic genes in vitrified-thawed spermatogonia stem cells type A of 6-day-old mice. *Iran J Basic Med Sci*. 2013;16(8):906–9.
55. Bowen Niu BL, et al. Melatonin promotes goat spermatogonia stem cells (SSCs) proliferation by stimulating glial cell line-derived neurotrophic factor (GDNF) production in sertoli cells. *Oncotarget*. 2016;7(47):77532.
56. Boyer A, et al. CTNBN1 signaling in sertoli cells downregulates spermatogonial stem cell activity via WNT4. *PLoS One*. 2012;7(1):e29764.
57. Navid S, et al. In vitro effects of melatonin on colonization of neonate mouse spermatogonial stem cells. *Syst Biol Reprod Med*. 2017;5:1–12.
58. Mirzapour T, et al. Evaluation of the effects of cryopreservation on viability, proliferation and colony formation of human spermatogonial stem cells in vitro culture. *Andrologia*. 2013;45(1):26–34.