


RESEARCH

Open Access



# One repeated transplantation of allogeneic umbilical cord mesenchymal stromal cells in type 1 diabetes: an open parallel controlled clinical study

Jing Lu<sup>1†</sup>, Shan-mei Shen<sup>1†</sup>, Qing Ling<sup>1†</sup>, Bin Wang<sup>2</sup>, Li-rong Li<sup>3</sup>, Wei Zhang<sup>1</sup>, Duo-duo Qu<sup>1</sup>, Yan Bi<sup>1\*</sup> and Da-long Zhu<sup>1\*</sup> 

## Abstract

**Background:** The preservation or restoration of  $\beta$  cell function in type 1 diabetes (T1D) remains as an attractive and challengeable therapeutic target. Mesenchymal stromal cells (MSCs) are multipotent cells with high capacity of immunoregulation, which emerged as a promising cell-based therapy for many immune disorders. The objective of this study was to examine the efficacy and safety of one repeated transplantation of allogeneic MSCs in individuals with T1D.

**Methods:** This was a nonrandomized, open-label, parallel-armed prospective study. MSCs were isolated from umbilical cord (UC) of healthy donors. Fifty-three participants including 33 adult-onset ( $\geq 18$  years) and 20 juvenile-onset T1D were enrolled. Twenty-seven subjects (MSC-treated group) received an initial systemic infusion of allogeneic UC-MSCs, followed by a repeat course at 3 months, whereas the control group ( $n = 26$ ) only received standard care based on intensive insulin therapy. Data at 1-year follow-up was reported in this study. The primary endpoint was clinical remission defined as a 10% increase from baseline in the level of fasting and/or postprandial C-peptide. The secondary endpoints included side effects, serum levels of HbA1c, changes in fasting and postprandial C-peptide, and daily insulin doses.

**Results:** After 1-year follow-up, 40.7% subjects in MSC-treated group achieved the primary endpoint, significantly higher than that in the control arm. Three subjects in MSC-treated group, in contrast to none in control group, achieved insulin independence and maintained insulin free for 3 to 12 months. Among the adult-onset T1D, the percent change of postprandial C-peptide was significantly increased in MSC-treated group than in the control group. However, changes in fasting or postprandial C-peptide were not significantly different between groups among the juvenile-onset T1D. Multivariable logistic regression assay indicated that lower fasting C-peptide and higher dose of UC-MSC correlated with achievement of clinical remission after transplantation. No severe side effects were observed.

\* Correspondence: [biyan@nju.edu.cn](mailto:biyan@nju.edu.cn); [zhudalong@nju.edu.cn](mailto:zhudalong@nju.edu.cn)

<sup>†</sup>Jing Lu, Shan-mei Shen and Qing Ling contributed equally to this work.

<sup>1</sup>Department of Endocrinology, Drum Tower Hospital Affiliated to Nanjing University Medical School, No 321, Zhongshan Road, Nanjing 210008, Jiangsu, China

Full list of author information is available at the end of the article



© The Author(s). 2021 **Open Access** This article is licensed under a Creative Commons Attribution 4.0 International License, which permits use, sharing, adaptation, distribution and reproduction in any medium or format, as long as you give appropriate credit to the original author(s) and the source, provide a link to the Creative Commons licence, and indicate if changes were made. The images or other third party material in this article are included in the article's Creative Commons licence, unless indicated otherwise in a credit line to the material. If material is not included in the article's Creative Commons licence and your intended use is not permitted by statutory regulation or exceeds the permitted use, you will need to obtain permission directly from the copyright holder. To view a copy of this licence, visit <http://creativecommons.org/licenses/by/4.0/>. The Creative Commons Public Domain Dedication waiver (<http://creativecommons.org/publicdomain/zero/1.0/>) applies to the data made available in this article, unless otherwise stated in a credit line to the data.

**Conclusion:** One repeated intravenous dose of allogeneic UC-MSCs is safe in people with recent-onset T1D and may result in better islet  $\beta$  cell preservation during the first year after diagnosis compared to standard treatment alone.

**Trial registration:** ChiCTR2100045434. Registered on April 15, 2021—retrospectively registered, <http://www.chictr.org.cn/>

**Keywords:** Mesenchymal stromal cells, Type 1 diabetes, Transplantation,  $\beta$  cell function

## Introduction

Type 1 diabetes (T1D) is an autoimmune disease characterized by a progressive and irreversible loss of insulin-producing  $\beta$  cells. Once diagnosed, individuals with T1D require life-long injections of exogenous insulin. Although intensive insulin therapy allows for improved glucose homeostasis, it cannot replace the highly specialized work done by pancreatic islets, neither can it suppress the autoimmune destruction of residual  $\beta$  cells. Preserved residue  $\beta$  cell function is associated with attenuation of glycemic fluctuation, as well as decreased risks of chronic diabetic complications [1, 2]. Therefore, blocking autoimmune attack, preserving, or even restoring the endogenous  $\beta$  cell function has been a long sought-after solution for T1D.

Mesenchymal stromal cells (MSCs) are non-hematopoietic, multipotent cells that can be sourced from various tissues, including bone marrow, umbilical cord (UC), and adipose tissue. Due to their properties of plasticity, immunomodulatory, anti-inflammatory, and homing ability to injured sites, MSCs are well studied as a cell-based therapy for tissue degeneration and immune-based pathologies, such as graft-versus-host disease, osteogenesis, cardiac disease, and Crohn's disease [3–5]. Additionally, MSCs are easily expandable for generating sufficient cell numbers, immune privileged from alloreactivity and less ethically controversial compared to other types of stem cells; therefore, they are widely used in over 6000 clinical trials [6, 7].

Plenty of evidence including our previous study in animal models of T1D have demonstrated that transplantation with MSCs can delay T1D onset, reverse hyperglycemia after onset, and increase both  $\beta$  cell function and mass [8–12]. Our work further clarified that MSCs predominantly accumulated in pancreatic tissues at 28 days after systemic infusion in none obese diabetic (NOD) mice. MSC infusion significantly attenuated insulinitis at least in part through modulating the balance between pro- and anti-inflammation, as well as effector T and regulatory T cells. Recently, clinical trials are undertaken to investigate the effect of MSCs in people with T1D. Up to now, two randomized controlled trials (RCT) have been published, both of which used single intravenous transplantation [13, 14]. No side effect was reported, and  $\beta$  cell function was preserved or even increased as compared with regular insulin therapy.

However, insulin independence was not achieved in most individuals received MSCs in these studies.

According to our previous data, the effects of MSCs on preserving  $\beta$  cell function and modulating inflammation were dose-dependent in diabetic NOD mice, and multiple doses of MSCs prolonged their presence in the pancreatic tissues and displayed longer effects [9]. Moreover, in our pilot trial of MSC transplantation for T1D, the levels of C-peptide in recipients who received a single dosage of MSCs showed a decreased tendency after three months (data not shown). Therefore, we decided to modify the MSC-based immunotherapy and increased the treatment course to repeated transplantation with an interval of three months. The objective of the present study was to evaluate the safety and efficacy of one repeated allogeneous UC-MSCs in treatment of subjects with T1D.

## Methods

### Study design and participants

This is an open-label, parallel-arm, non-randomized study comparing MSCs intervention with standard insulin therapy in participants with T1D at the Endocrinology Department of Nanjing Drum Tower Hospital during 2013–2019. Individuals with T1D were diagnosed based on clinical features with at least one positive islet antibody and/or a fasting C-peptide  $\leq 200$  pmol/L. All participants and/or guardians provided written informed consent. The study was approved by both the Ethical and Scientific Committee of our hospital and the Office of Science and Technology in the hospital supervised our data management, trial monitoring and safety. This study was registered as a clinical trial (ChiCTR2100045434, [www.chictr.org.cn](http://www.chictr.org.cn)).

Eligible participants were aged 8 to 55 years at enrollment with insulin requirement since diagnosis of T1D and had a level of fasting C-peptide  $\geq 100$  pmol/L. Exclusions included cardiorespiratory insufficiency, failure of one or more organs, positive for HIV or viral hepatitis, pregnancy, and an underlying hematologic, rheumatic, psychiatric, or malignant disease. Patients who attended our clinic during 2013–2019 were assessed and enrolled if eligible. Participants consenting to receive UC-MSC therapy were assigned to the intervention

group while the others were assigned to the control group.

### Preparation of UC-MSC

The MSCs were isolated from Wharton's Jelly of UC using the tissue explant method in GMP-certified facilities [6]. Briefly, fresh UCs were obtained from informed healthy mothers in maternity department after normal deliveries. The UCs were cut into pieces of 1 mm<sup>3</sup> and incubated in a 5% CO<sub>2</sub> incubator at 37 °C and culture medium was changed every 3–4 days. When well-developed colonies of fibroblast-like cells appeared, the cells were trypsinized and transferred into a new flask for further expansion. Both UCs and isolated fibroblast-like cells were cultured in low glucose Dulbecco's modified Eagle's medium containing 10% fetal bovine serum, 1% penicillin/streptomycin, and 1.25 mg/ml amphotericin B.

MSCs were identified as described before [6], and in accordance with three definition criteria: (i) being spindle-like and adhesion to plastic, (ii) positive expression of (>95%) CD73, CD90, and CD105, negative expression (<2%) for CD19, CD34, CD11b, CD45, and HLA-DR, and (iii) multilineage differentiation potentials of adipogenesis, osteogenesis, and chondrogenesis. All cells were harvested in passages 2–4 and cryopreserved. Before being cryopreserved, the samples of supernatant and cells were sent to the quality control lab for in-process testing. Before clinic use, UC-MSCs were immediately unfrozen in thermocell mixing block, and then washed with complete medium by centrifugation at 1200 n/min for 5 min followed by resuspension in fresh complete medium. After 24 h of culture, the complete medium was changed again to ensure elimination of the cryoprotective agent. Then, the cells were passaged two times and underwent a fast release testing as last safeguard measure to ensure the safety of recipients. The release assays included sterility, endotoxin, mycoplasma, cell amount and viability, and BSA residual level. MSCs were finally released for infusion with a viability of >90% and absence of contamination. Besides, chromosomal karyotype of UC-MSC was defined to ensure sex-matched donors for recipients.

### Interventions

All participants received intensive insulin therapy, either with multiple-dose insulin injection regimen or continuous subcutaneous insulin infusion. T1D education was offered to all subjects, including the principles of flexible insulin therapy. Participants were instructed to perform self-monitored blood glucose and adjust insulin dose accordingly. Target levels of fasting blood glucose were 5.0–8.0 mmol/L for juveniles and 4.0–7.2 mmol/L for

adults, while levels of postprandial blood glucose were suggested to be no more than 10.0 mmol/L for all.

Participants in the MSC-treated group received repeat transplantation with an interval of 3 months. All the female participants received the same batch of UC-MSC from a female donor while the male participants received the batch from a male donor. At each time, 1.0 × 10<sup>6</sup> cells/kg was given as one single intravenous infusion within 10 min. To prevent potential risk of hypersensitivity, 2.5 mg dexamethasone was injected intravenously prior to MSC infusion. Since the first transplantation, participants were followed up at 3, 6, and 12 months and yearly afterward. Adverse events and their severity were assessed and recorded throughout the study.

### Endpoints and assessments

The primary efficacy endpoint was clinical remission characterized by improved β cell function through 1-year follow-up. Accordingly, clinical remission was defined as a 10% increase from baseline in the levels of fasting and/or postprandial C-peptide. Secondary efficacy endpoints included changes in HbA1c, fasting C-peptide, 2-h postprandial C-peptide, and daily insulin dose, as well as safety of the therapy.

During each visit, participants underwent history taking and physical examinations; meanwhile, daily insulin doses were recorded. Besides, blood samples were obtained for laboratory tests. Standard-meal tolerance test was performed for islet function evaluation. Briefly, after a 10-h overnight fast, each participant received steamed bread which was made of flour with 100 g for adult and 2.3 g/kg up to 100 g for child. The levels of plasma glucose and C-peptide before and 2 h after food stimulation were analyzed. HbA1c was measured by high-pressure liquid chromatography. Islet autoantibodies including insulin autoantibody, glutamic acid decarboxylase autoantibody, and insulinoma-associated antigen-2 autoantibody were determined by ELISA technique, while islet cell antibody was determined by indirect immunofluorescence. Whole blood cell counts, liver and renal function, infections, and cancer screening were performed for safety assessment.

### Statistical analysis

All statistical analyses were performed using SPSS version 22.0 (SPSS Inc., USA). Descriptive statistics were reported as mean ± SD for normally distributed variables or median (interquartile range [IQR]) for data of skewed distribution. Continuous variables were compared by the Student's t test or Mann-Whitney U test, and categorical variables were compared by the chi-square analysis or Fisher exact test. The main analysis was done on the per-protocol participant dataset, which comprised subjects who received the allocated treatment and

completed follow-up. Correlation analyses were performed using the Pearson or Spearman tests according to variable characteristics and distribution. Multivariable logistic regression analyses were used to assess the associations of clinical characteristics at baseline with final achievement of clinical remission. The odds ratios (ORs) and 95% confidence intervals (CIs) were given.

## Results

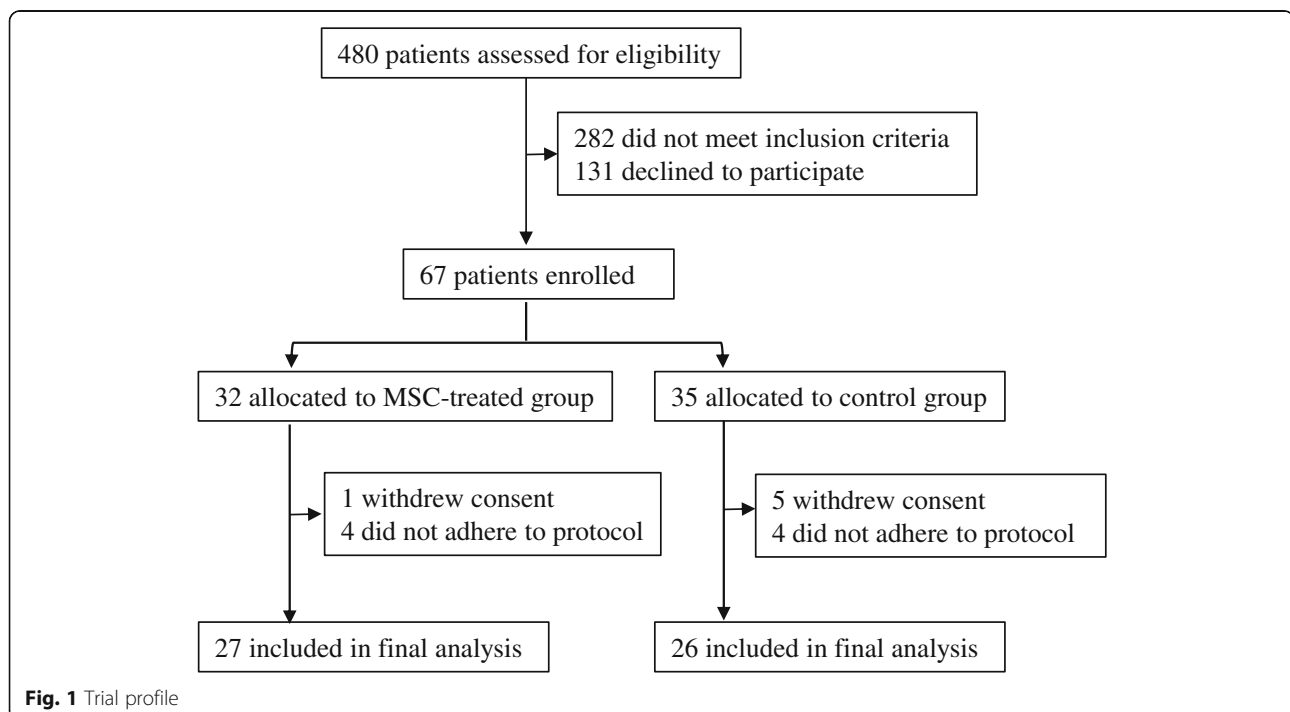
### Characteristics of the participants

Sixty-seven participants were enrolled with 32 assigned to the MSC-treated group and 35 to the control group. During the trial 5 participants in the MSC-treated group and 9 participants in the control group discontinued treatment because of none-adherence to study protocol or withdrawal of consent (Fig. 1). During the trial, five participants in the MSC-treated group discontinued treatment: four individuals did not adhere to study protocol due to personal reasons and failed to complete follow-up schedule (two individuals discontinued after 3 months before the second dose and two patients after 5 months), and one withdrew her consent on the day before first transplantation. Nine participants in the control group discontinued the trial: five withdrew their consent within 3 months and four individuals adhered to follow-up schedule no more than half a year. A total of 53 participants (53% male, 62% adult) were included for final analysis. The mean age was  $24.9 \pm 14.2$  years, and the mean duration of time from diagnosis of T1D to enrolment of this study ranged from 0 to 24 month ( $4.7 \pm$

6.1 months). All participants presented obvious symptoms of hyperglycemia at disease onset, and 62.3% of them complicated with diabetic ketosis or diabetic ketoacidosis (DKA). The mean body mass index (BMI) was  $18.9 \pm 3.5$  kg/m<sup>2</sup>; and the mean HbA1c level was  $9.5 \pm 2.9\%$ . Insulin therapies were immediately started once diabetes was diagnosed. Demographic and baseline characteristics were similar between the MSC-treated and control groups (Table 1), with the exception of daily insulin dose which was lower in the MSC-treated group.

### Adverse events

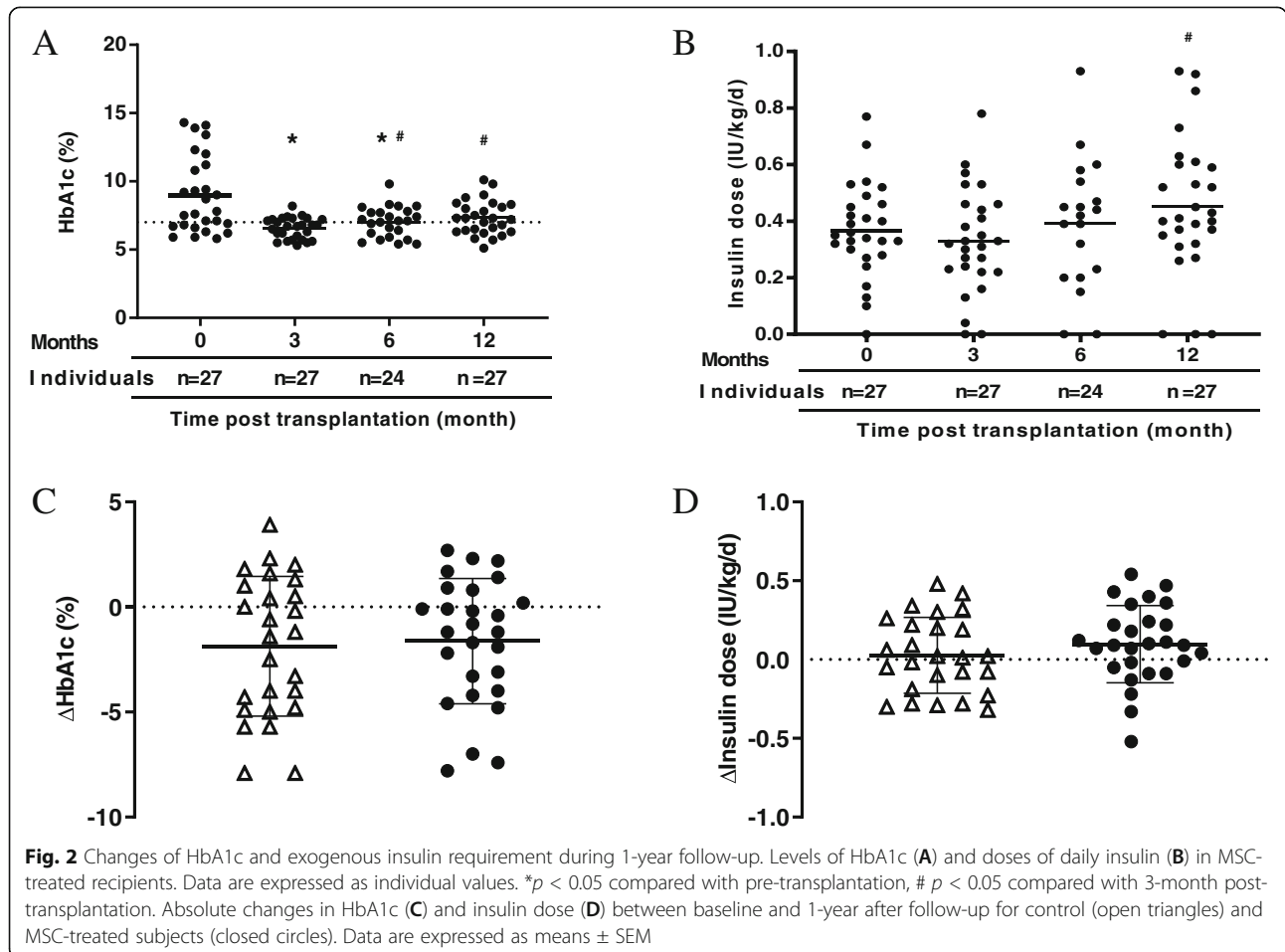
Three adult recipients had mild fever which occurred 1.5, 17, and 20 h after MSC infusion respectively, and the highest temperature was no more than 38.3 °C. Two of them occurred at the second time of transplantation, while another experienced at the first transplantation. The fever was self-limiting, and all of them recovered within 24-h of MSC treatment without any antipyretics or antibiotics. Other recipients tolerated the procedure well. There was no severe adverse effect, such as mortality, thrombosis, severe infection, or allergic reactions. During the first year, no tumors or chronic infections have been diagnosed in any of the participants. Neither did any of them reported episodes of hyperglycemic ketoacidosis or assisted hypoglycemia. Besides, the four withdrawn recipients who received one or two doses of MSCs as declared above reported no adverse events during their available follow-up.



**Table 1** Baseline characteristics of the participants

	Control (n = 26)	MSC-treated (n = 27)	P
Sex (male/female)	13/13	12/15	0.685
Age (years)	27.4±14.3	22.4±13.9	0.207
Duration (months)	1.0 (0.1, 7.6)	2.3 (0.9, 7.7)	0.068
DK/DKA (n)	16	17	0.915
BMI (kg/m <sup>2</sup> )	19.1±3.5	18.7±3.6	0.700
HbA1c (%)	10.0 ± 3.0	9.0±2.8	0.174
Islet antibodies (n)			0.576
Negative	2	3	
One antibody	8	10	
≥ 2 antibodies	16	14	
FCP (pmol/L)	242.5±91.7	238.0±117.0	0.877
PCP (pmol/L)	574.0±328.0	567.4±419.0	0.950
Insulin doses (IU/kg/day)	0.48±0.24	0.35±0.14	0.020

Data are shown as number (n), means ± S.D or median (interquartile range). DK, diabetic ketosis; FCP, fasting C-peptide; PCP, 2-h postprandial C-peptide





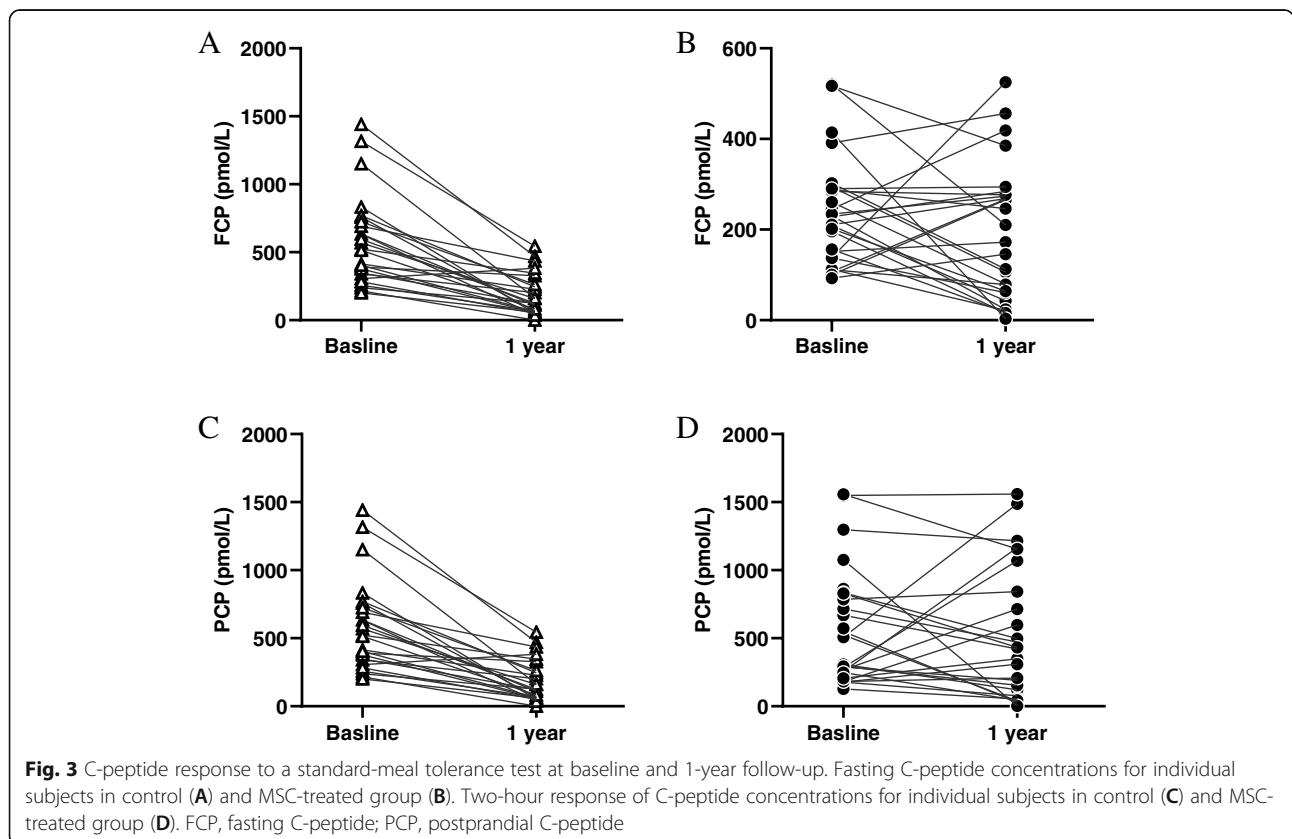
**Efficacy evaluation**

At the end of 1-year follow-up, 11 recipients in MSC-treated group maintained clinical remission (11/27, 40.7%) whereas the control group had a significantly lower rate of clinical remission (3/26, 11.5%,  $p = 0.041$ ). A post hoc power analysis indicated 68.4% power to assess such a difference in clinical remission. Besides, none of the control group but three MSC-treated adults achieved insulin free, although there was no statistic difference. Two of the three MSC-treated adults became insulin independent within 3 months after the 1st transplantation and initiated insulin again 1 year and 20 months later respectively. Another recipient achieved insulin free 6 months after the 2nd transplantation and started again 3.8 months later.

HbA1c levels were significantly decreased and reached their lowest levels at 3 months ( $6.6 \pm 0.8\%$ ) in the MSC-treated group, but gradually increased to  $6.9 \pm 1.1\%$  and  $7.3 \pm 1.3\%$  respectively at 6 and 12 months. The average daily insulin dose requirements in MSC-treated individuals were relatively stable during the follow-up. Generally, there were no differences in the changes of HbA1c or insulin doses between the control and MSC-treated groups (Fig. 2). Residue  $\beta$  cell function was evaluated by standard-meal tolerance test. Although MSC-treated group showed attenuated reduction in fasting and

postprandial C-peptide, no statistic difference was observed (Additional file 1: Table S1). For individual subjects in MSC-treated group, 11 out of 27 subjects increased in fasting C-peptide and 10 of them increased in postprandial C-peptide. On the other side, increased fasting and postprandial C-peptide were seen in only 6 and 5 of the 26 control subjects respectively (Fig. 3).

Considering the heterogeneity in T1D, we re-evaluated residue  $\beta$  cell function in subgroups based on the onset of age (Additional file 1: Table S1). Demographic characteristics and levels of HbA1c, FCP and PCP were comparable between the MSC-treated and control groups in both adults and juveniles (data not shown). Among adult-onset T1D ( $\geq 18$  years), the mean level of postprandial C-peptide decreased in the control subjects but increased in MSC-treated subjects. After adjusting for baseline levels, the ratio of changed postprandial C-peptide was significantly increased in MSC-treated group compared with the ratio of change in the control group. On the other hand, MSC treatment did not show protective effect on  $\beta$  cell function in juveniles. Subgroup analysis based on the onset with or without diabetic ketoacidosis or DKA was also assessed and showed similar tendency to the analysis of the whole study population (Additional file 2: Table S2).



### Factors associated with the efficacy of clinical remission

Clinical remission occurred in both the control and MSC-treated groups; thus, contributory factors were first analyzed in the whole study population. Intriguingly, multivariable logistic regression analysis further confirmed that subjects treated with MSC were four times more likely to achieve clinical remission than those with regular insulin therapy (Additional file 3: Table S3; OR = 4.38,  $p = 0.044$ ). Besides, subjects with higher BMI (OR = 1.26,  $p = 0.038$ ) and lower baseline fasting C-peptide (OR = 0.99,  $p = 0.046$ ) were more likely to become clinical remission.

To further examine potential factors contributing to the efficacy of MSC treatment, all individuals receiving MSC were grouped according to the achievement of clinical remission. Compared with recipients who did not achieve remission at 1-year follow-up, those achieved remission had significantly lower levels of fasting C-peptide at baseline ( $p = 0.040$ ), and relatively higher levels of HbA1c and infused numbers of MSC though without statistical significance (Fig. 4). A logistic regression analysis was applied of fasting C-peptide, HbA1c, and cell numbers of MSC; meanwhile, potential confounders (age, duration, sex, BMI) were included and adjusted. According to the step-wise forward selection, fasting C-peptide (OR 0.982(0.966–0.997),  $P = 0.023$ ) and number of transfused MSCs (OR 1.141(1.017–1.280),  $P = 0.025$ ) were independently associated with the achievement of clinical remission.

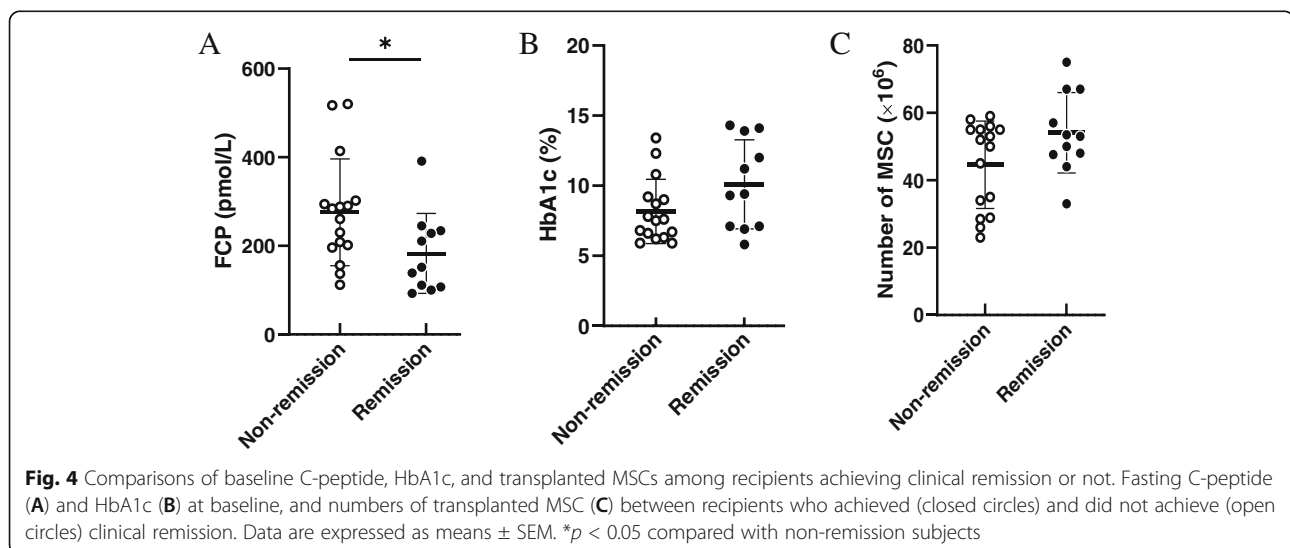
### Discussion

This is the first study to report the feasibility and general tolerance of one repeated systemic UC-MSCTransfusion in both juveniles and adults with T1D. After 1-year follow-up, 40.7% participants remained clinical remission

in MSC-treated group, nearly 2.5 times higher than those achieved in the control group, indicating the efficacy of UC-MSCs in preservation of  $\beta$  cell function.

Natural history studies in T1D have shown a progressive decline in insulin secretion ever since the pre-clinical stage and continuing after diagnosis [15]. During the 1st year of diagnosis, only about 20% of individuals with T1D maintained C-peptide, and mean levels of C-peptide slide down across all age groups, with 17.6% decrease in adults of 21–46 years and almost 40% decrease in youth of 7–12 years old [16]. Retention of endogenous  $\beta$  cell function is associated with beneficial outcomes but still challengeable in clinic. Autologous nonmyeloablative hematopoietic stem cell transplantation (AHSCT) is the first approach ever proved to successfully halt disease process. In a multicenter analysis, 59% of individuals with T1D achieved insulin free within 6 months of transplantation. The median duration of insulin independence was 12 months [17], and the longest lasting time was 5 years in our center [18]. Nevertheless, 52% of treated individuals experienced adverse effects with one serious case who died of *Pseudomonas aeruginosa* sepsis [14]. Therefore, AHSCT is not widely applied and safer cell-based therapeutic options are in demand.

MSCs also have unique immunomodulatory properties and represent the most clinically studied experimental cell therapy in many immune-mediated disorders, such as graft-versus-host disease, Crohn's disease, and systemic lupus erythematosus [2, 19]. Based on encouraging pre-clinical animal data in T1D models, MSCs also have become an attractive potential therapy for T1D. Up to now, 15 trials have been registered on the website of [ClinicalTrials.gov](https://www.clinicaltrials.gov). Regimens of MSC treatment including cell origin, dose, frequency and route of transplantation are varied among registered clinical centers.



In our previous pilot trial, four individuals with T1D received a single transfusion of allogenic bone marrow MSCs [9]. No side effect was observed during 4-year follow-up. One responder showed increased postprandial C-peptide during the first year and the other achieved insulin independence for 3 months. MSC treatment appeared to be safe and beneficial for  $\beta$  cell preservation, which was contemporaneously confirmed by an open-label RCT in Sweden [13]. Twenty newly diagnosed individuals with T1D were randomly assigned to either autologous bone marrow MSCs or insulin-only treatment. After 1 year, a mean 5% increase in the peak C-peptide response and 10% increase in the area under the curve of C-peptide was observed in MSC-treated subjects, significantly higher than the percent changes of C-peptide in the control group. But no case of insulin free was reported. In an earlier double blind RCT, 15 of 29 newly diagnosed T1D received a single transfusion of allogenic UC-MSCs and displayed an obviously increased and constantly higher fasting C-peptide than the control group through 2-year follow-up. Three recipients discontinued insulin 1 year after transplantation, but little information was available for the lasting period [14].

In the above-mentioned reports, preserved C-peptide appeared to be a consistent efficacy, whereas insulin independence seemed less achievable; therefore, we defined clinical remission in this study to be over 10% increase in either fasting or postprandial C-peptide. Based on an expanded sample size and a parallel controlled design, our study demonstrated a significantly higher achievement of clinical remission after one repeated UC-MSC transfusion. Moreover, insulin independence otherwise not the primary endpoint was observed in three recipients in contrast to none of the control group, thus further implying the effect of our MSC therapeutic strategy in improving endogenous insulin secretion. The difference in the achievement of insulin independence between our and previous trials is probably due to disparities in study design, characteristics of enrolled subjects, source, and dose of MSCs. Future RCTs with expanded sample size may take insulin independence as a primary endpoint to further address the efficacy of MSC therapy in applicable subsets of T1D.

Among secondary endpoints, changes of C-peptide showed distinct tendencies between the groups. Levels of C-peptide decreased in most participants in the control group, with a mean 28% and 32% decrease in the fasting and postprandial state, respectively. On the other hand, a convergence for improved C-peptide in MSC-treated group was observed, with a mean 9% decrease in fasting C-peptide and 16% increase in postprandial C-peptide, although no statistical significance was achieved. Glycemic control maintained around the targeted level

without obviously increased insulin dose in participants received MSCs. Nevertheless, such a benefit in glycemic control was not restricted to MSC intervention, because no difference was observed in levels of HbA1c or dose of insulin when compared to the control group. This finding was consistent with that in the RCT from Sweden [13], probably due to comparable basic diabetic care provided to all participants.

Intravenous administration of MSCs is generally considered to be clinically safe, without side effects recorded in previous trials in T1D [20]. In this study, we increased the treatment course to repeated transfusion of MSCs. Three recipients experienced mild fever but recovered spontaneously within 24 h. Such a post-infusion febrile reaction was once reported in clinical trials of other diseases [21]. Notably, we did not observe any severe adverse events, and both juvenile and adult recipients tolerated well.

There was a heterogeneity in the therapeutic efficacy of UC-MSCs, which addressed the potential factors associated with therapeutic effects of UC-MSCs for T1D. According to previous experiences in AHSCT, good responders were older at onset, were treated soon after T1D diagnosis, had lower instances of DKA, and had lower HbA1c levels at the time of transplantation [22]. However, there was no difference in age of onset, gender, occurrence of DKA, or duration of T1D between good and poor responders to UC-MSC treatment in this trial. In contrast, we found that subjects who had lower levels of fasting C-peptide at the time of enrollment and relatively higher HbA1c levels were more likely to achieve clinical remission, indicating that UC-MSCs are beneficial for newly diagnosed T1D with less residual  $\beta$  cell function and relatively poor glycemic control. As a technical element, the number of transfused UC-MSCs also influenced the therapeutic outcomes. In our model for predicting clinical remission, the number of UC-MSCs exerted larger contribution than other parameters, reinforcing the evidence of dose-dependent efficacy of MSC treatment. The optimal doses as well as courses of MSC transplantation should be further investigated in future studies.

The present study has some limitations. Firstly, there was an imbalance in insulin requirement at baseline between the two groups, indicating the possibility of selection bias due to non-randomized design. Since this trial took relatively long time to complete, it may further introduce discordance or confounding into data collection. We adjusted potential confounders while analyzing contributors to clinical remission of T1D, but confounding related to unknown variables might still exist. Secondly, in the standard-meal tolerance test for the evaluation of  $\beta$  cell function, we only provided levels of C-peptide before and 2 h after meal. Because multiple



blood samplings during the tolerance test was unacceptable by some participants especially young children, levels of C peptide at additional time points or area under the curve were not available. Thirdly, a post hoc power analysis indicated 68.4% power to assess the effect of MSCs on clinical remission. Future RCTs with larger sample size and an intention-to-treat analysis are required to prove the efficacy of MSCs with adequate power.

## Conclusion

This trial is the first demonstration, to our knowledge, one repeated intravenous dose of allogeneic UC-MSCs is feasible and safe for individuals with T1D. Besides, it provides evidence that this therapy may be beneficial for preservation of endogenous  $\beta$  cell function during the first year after diagnosis compared to standard treatment alone. Larger RCTs with longer follow-up are required for further validation, and the treatment regimen requires stepwise optimization for better efficacy.

## Abbreviations

T1D: Type 1 diabetes; MSCs: Mesenchymal stromal cells; UC: Umbilical cord; NOD: Non-obese diabetic; RCT: Randomized controlled trials; DKA: Diabetic ketoacidosis; BMI: Body mass index; IQR: Interquartile range; ORs: Odds ratios; CIs: Confidence intervals; HSCT: Hematopoietic stem cell transplantation

## Supplementary Information

The online version contains supplementary material available at <https://doi.org/10.1186/s13287-021-02417-3>.

**Additional file 1: Table S1.** Absolute and percent changes in  $\beta$  cell function at 1-year for the total population and age-based subgroups. Data are shown as means  $\pm$  S.D. FCP, fasting C-peptide; PCP, 2-h post-prandial C-peptide.  $\Delta$ FCP ratio was defined as the calibration of changed FCP at 1-year follow-up by its baseline level;  $\Delta$ PCP ratio was defined as the calibration of changed PCP at 1-year follow-up by its baseline level.

**Additional file 2: Table S2.** Absolute and percent changes in  $\beta$  cell function at 1-year for subgroups based on DK/DKA history. Data are shown as means  $\pm$  S.D. DK, diabetic ketosis; DKA, diabetic ketoacidosis.

**Additional file 3: Table S3.** Logistic regression analysis of clinical characteristics associated with clinical remission at 1-year for the total population.

## Acknowledgements

The authors thank all of the umbilical cord donors and the patients for their willingness to participate in this study. The authors also appreciate Liudi Wang, Tianyun Gao, and Yuanyuan Xie at the Clinical Stem Cell Center in Nanjing Drum Tower Hospital for their help with preparation and transporting of UC-MSCs.

## Authors' contributions

JL participated in MSC transplantation, patients' follow-up, data collection, performed the statistical analysis, prepared figures and tables, and wrote the manuscript. SS and QL participated in MSC transplantation, patients' follow-up, and the interpretation of data. BW participated in preparation and quality control of MSCs. LR participated in patients' follow-up and the interpretation of data. WZ and DQ participated in the data collection. YB supervised the project, interpreted the results, and co-wrote the manuscript. DZ supervised the project, designed the study, interpreted data analysis, and approved the manuscript. The author(s) read and approved the final manuscript.

## Funding

This study was sponsored by grants from the National Key Research and Development Program of China (2017YFC1309605), Nanjing Health Youth Talent (QRX17123), and Jiangsu Provincial Key Medical Discipline (ZDXKB2016012)

## Availability of data and materials

The datasets generated during and/or analyzed during the current study are available from the corresponding author on reasonable request.

## Declarations

### Ethics approval and consent to participate

The study was approved by the Ethics Committee of Nanjing Drum Tower Hospital (No. SC201600202). All participants and/or guardians provided written informed consent. The human newborn umbilical cord tissues used in this study were obtained from the Clinical Stem Cell Center in Nanjing Drum Tower Hospital which was also approved by the Ethics Committee.

### Consent for publication

Consent for publication was obtained from every participant.

### Competing interests

The authors declare no competing interests.

### Author details

<sup>1</sup>Department of Endocrinology, Drum Tower Hospital Affiliated to Nanjing University Medical School, No 321, Zhongshan Road, Nanjing 210008, Jiangsu, China. <sup>2</sup>Clinical Stem Cell Center, Drum Tower Hospital Affiliated to Nanjing University Medical School, No 321, Zhongshan Road, Nanjing 210008, Jiangsu, China. <sup>3</sup>School of Clinical Medicine and Nursing, Suzhou Vocational Health College, No 28, Kehua Road, Suzhou International Education Park, Suzhou 215151, Jiangsu, China.

Received: 22 November 2020 Accepted: 25 May 2021

Published online: 10 June 2021

## References

- Lachin JM, McGee P, Palmer JP. Impact of C-peptide preservation on metabolic and clinical outcomes in the Diabetes Control and Complications Trial. *Diabetes*. 2014;63(2):739–48. <https://doi.org/10.2337/db13-0881>.
- Kuhtreiber WM, Washer SL, Hsu E, Zhao M, Reinhold PR, Burger D, et al. Low levels of C-peptide have clinical significance for established Type 1 diabetes. *Diabet Med*. 2015;32(10):1346–53. <https://doi.org/10.1111/dme.12850>.
- Shammaa R, El-Kadiry AE, Abusarah J, Rafei M. Mesenchymal Stem Cells Beyond Regenerative Medicine. *Front Cell Dev Biol*. 2020;8:72. <https://doi.org/10.3389/fcell.2020.00072>.
- Xv J, Ming Q, Wang X, Zhang W, Li Z, Wang S, et al. Mesenchymal stem cells moderate immune response of type 1 diabetes. *Cell Tissue Res*. 2017;368(2):239–48. <https://doi.org/10.1007/s00441-016-2499-2>.
- Shi Y, Wang Y, Li Q, Liu K, Hou J, Shao C, et al. Immunoregulatory mechanisms of mesenchymal stem and stromal cells in inflammatory diseases. *Nat Rev Nephrol*. 2018;14(8):493–507. <https://doi.org/10.1038/s41581-018-0023-5>.
- Xie Y, Liu W, Liu S, Wang L, Mu D, Cui Y, et al. The quality evaluation system establishment of mesenchymal stromal cells for cell-based therapy products. *Stem Cell Res Ther*. 2020;11(1):176. <https://doi.org/10.1186/s13287-020-01696-6>.
- Mundra V, Gerling IC, Mahato RI. Mesenchymal stem cell-based therapy. *Mol Pharm*. 2013;10(1):77–89. <https://doi.org/10.1021/mp3005148>.
- Carlsson PO, Korsgren O, Le Blanc K. Mesenchymal stromal cells to halt the progression of type 1 diabetes? *Curr Diab Rep*. 2015;15(7):46. <https://doi.org/10.1007/s11892-015-0616-3>.
- Li L, Hui H, Jia X, Zhang J, Liu Y, Xu Q, et al. Infusion with human bone marrow-derived mesenchymal stem cells improves beta-cell function in patients and non-obese mice with severe diabetes. *Sci Rep*. 2016;6(1):37894. <https://doi.org/10.1038/srep37894>.
- Dang LT, Bui AN, Le-Thanh NC, Truong NC, Bui AT, Kim NP, et al. Intravenous infusion of human adipose tissue-derived mesenchymal stem cells to treat type 1 diabetic mellitus in mice: an evaluation of grafted cell

- doses. *Adv Exp Med Biol.* 2018;1083:145–56. [https://doi.org/10.1007/5584\\_2017\\_127](https://doi.org/10.1007/5584_2017_127).
11. Hsiao CY, Chen TH, Huang BS, Chen PH, Su CH, Shyu JF, et al. Comparison between the therapeutic effects of differentiated and undifferentiated Wharton's jelly mesenchymal stem cells in rats with streptozotocin-induced diabetes. *World J Stem Cells.* 2020;12(2):139–51. <https://doi.org/10.4252/wjsc.v12.i2.139>.
  12. Donzelli E, Scuteri A. Mesenchymal stem cells: a trump card for the treatment of diabetes? *Biomedicines.* 2020;8(5). <https://doi.org/10.3390/biomedicines8050112>.
  13. Carlsson PO, Schwarcz E, Korsgren O, Le Blanc K. Preserved beta-cell function in type 1 diabetes by mesenchymal stromal cells. *Diabetes.* 2015; 64(2):587–92. <https://doi.org/10.2337/db14-0656>.
  14. Hu J, Yu X, Wang Z, Wang F, Wang L, Gao H, et al. Long term effects of the implantation of Wharton's jelly-derived mesenchymal stem cells from the umbilical cord for newly-onset type 1 diabetes mellitus. *Endocr J.* 2013; 60(3):347–57. <https://doi.org/10.1507/endocrj.EJ12-0343>.
  15. DiMeglio LA, Evans-Molina C, Oram RA. Type 1 diabetes. *Lancet.* 2018; 391(10138):2449–62. [https://doi.org/10.1016/S0140-6736\(18\)31320-5](https://doi.org/10.1016/S0140-6736(18)31320-5).
  16. Greenbaum CJ, Beam CA, Boulware D, Gitelman SE, Gottlieb PA, Herold KC, et al. Fall in C-peptide during first 2 years from diagnosis: evidence of at least two distinct phases from composite type 1 diabetes TrialNet data. *Diabetes.* 2012;61(8):2066–73. <https://doi.org/10.2337/db11-1538>.
  17. D'Addio F, Valderrama VA, Ben NM, Franek E, Zhu D, Li L, et al. Autologous nonmyeloablative hematopoietic stem cell transplantation in new-onset type 1 diabetes: a multicenter analysis. *Diabetes.* 2014;63(9):3041–6. <https://doi.org/10.2337/db14-0295>.
  18. Shen S, Li L, Ouyang J, Xu J, Zhu D. Remission induced by autologous hematopoietic stem cell transplantation in one newly diagnosed type 1 diabetes patient with diabetic ketoacidosis: a case report. *J Diabetes.* 2012; 4(4):359–61. <https://doi.org/10.1111/j.1753-0407.2012.00214.x>.
  19. Wang D, Li J, Zhang Y, Zhang M, Chen J, Li X, et al. Umbilical cord mesenchymal stem cell transplantation in active and refractory systemic lupus erythematosus: a multicenter clinical study. *Arthritis Res Ther.* 2014; 16(2):R79. <https://doi.org/10.1186/ar4520>.
  20. Galipeau J, Sensebe L. Mesenchymal stromal cells: clinical challenges and therapeutic opportunities. *Cell Stem Cell.* 2018;22(6):824–33. <https://doi.org/10.1016/j.stem.2018.05.004>.
  21. Lalu MM, McIntyre L, Pugliese C, Fergusson D, Winston BW, Marshall JC, et al. Safety of cell therapy with mesenchymal stromal cells (SafeCell): a systematic review and meta-analysis of clinical trials. *PLoS One.* 2012;7(10): e47559. <https://doi.org/10.1371/journal.pone.0047559>.
  22. Gu W, Hu J, Wang W, Li L, Tang W, Sun S, et al. Diabetic ketoacidosis at diagnosis influences complete remission after treatment with hematopoietic stem cell transplantation in adolescents with type 1 diabetes. *Diabetes Care.* 2012;35(7):1413–9. <https://doi.org/10.2337/dc11-2161>.

## Publisher's Note

Springer Nature remains neutral with regard to jurisdictional claims in published maps and institutional affiliations.

**Ready to submit your research? Choose BMC and benefit from:**

- fast, convenient online submission
- thorough peer review by experienced researchers in your field
- rapid publication on acceptance
- support for research data, including large and complex data types
- gold Open Access which fosters wider collaboration and increased citations
- maximum visibility for your research: over 100M website views per year

**At BMC, research is always in progress.**

Learn more [biomedcentral.com/submissions](https://www.biomedcentral.com/submissions)

